



**In the Name of God**



### **Project Manager**

**Dr. Mohammad Reza Sabri**, Vice- Chancellor of Education

### **Editorial Board**

- **Dr. Tahereh Changiz**, Chancellor of Isfahan university of medical sciences
- **Dr. Ali Reza Yousefi**, Vice- Chancellor for Development & Human Resources Management
- **Dr. Shaghayegh Haghjooye Javanmard**, Vice- Chancellor for Research and Technology Affairs
- **Dr. Seyyed Mohsen Hosseini**, Vice- Chancellor for Student and Cultural Affairs
- **Dr. Hamid Mir Mohammadsadeghi**, Head of International Relations Management
- **Dr. Nikoo Yamani**, Manager of Education Development Center
- **Dr. Mohammad Hassan Emami Dehkordi**, Dean of School of Medicine
- **Dr. Abbas Jafarian**, Dean of School of Pharmacy
- **Dr. Abbas Ali Khademi**, Dean of School of Dentistry
- **Dr. Fariba Taleghani**, Dean of School of Nursing and Midwifery
- **Dr. Mohammad Reza Marasy**, Dean of School of Health
- **Dr. Mohammad Hassan Entezari**, Dean of School of Nutrition and Food Sciences
- **Dr. Hossein Rabbani**, Dean of school of Advanced Medical Sciences and Technologies
- **Dr. Mahmoud Keyvan Ara**, Dean of school of Management and Medical Information
- **Dr. Javid Mostmand**, Dean of School of Rehabilitation Sciences

### **Developmental Editor**

**Dr. Marjan Mansourian**, Director of International Development, Vice- Chancellor of Education

### **Design**

Negar Afarin Fardaye Shargh Institute  
+983137779461 , +989100810080

### **Art Director & Graphic designer**

Arezoo Shojaei, Zhara Hasani

### **Photography**

Ali Mirzaei

### **Printing**

Negar Afarin Fardaye Shargh Institute

### **Publisher**

Isfahan university of medical sciences

|    |   |
|----|---|
| 8  | <b>MASSAGES</b>   |
|    | Massage From The Chancellor<br>Massage From Thevice-Chancellor of Education   |
| 12 | <b>SHORT HISTORY</b>  |
|    | World's Isfahan Hidden Jewell   |
| 16 | <b>ISFAHAN UNIVERSITY OF MEDICAL SCIENCES</b>   |
| 24 | <b>CHANCELLOR</b>   |
| 26 | <b>SCHOOLS</b>  |
|    | Isfahan Medical Schools<br>School of Dentistry<br>School of Pharmacy and Pharmaceutical Sciences<br>School of Nursing and Midwifery<br>School of Rehabilitation Sciences<br>School of Nutrition and Food Science<br>School of Health<br>School of Advanced Technologies in Medicine<br>School of Management and Medical Information<br>Tadbir International College<br>Medical Education Development Center |
| 58 | <b>AFFILIATED HOSPITALS</b>   |
|    | Alzahra(sa)Hospital<br>Feiz Hospital<br>Dr.Chamran Hospital<br>Khorshid Hospital<br>Amin Hospital<br>Ayatollah Kashani Hospital<br>Imam Hosse in (as) Hospital<br>Dr.Beheshti Hospital<br>Imam Mosa Kazem (as) Hospital<br>Seyyed-al-Shohada (as) Hospital  |
| 80 | <b>SCIENCE AND TECHNOLOGY PARK</b>  |

|     |   |
|-----|---|
| 84  | <b>COMPREHENSIVE RESEARCH LAB</b>   |
|     | Comprehensive Research Lab  |
| 88  | <b>RESEARCH INSTITUTES</b>  |
|     | Isfahan Cardiovascular Research Institute<br>(PPNCD) Reaserch Institute   |
| 98  | <b>RESEARCH CENTERS</b>   |
|     | Acquired Immuno Deficiency Reaserch Center<br>Sciences Behavioral Reaserch Center<br>Craniofacial and Cleft Reaserch Center<br>Materials Dental Reaserch Center (DMRC)<br>Isfahan Emergency Medicine Reaserch Center<br>Food Security Reaserch Center<br>Infectious Disease Reaserch Center<br>Isfahan Clinical Toxicology Reaserch Center<br>Isfahan Endocrine Metabolism Reaserch Center<br>Isfahan Eye Reaserch Center<br>Kidney Disease and Renal Transplant Reaserch Center<br>Isfahan Neurosciences Reaserch Center<br>Medical Education Reaserch Center<br>Medical Image and Signal Processing Reaserch Center<br>Nosocomial Infection Reaserch Center<br>Psychosomatic Reaserch Center<br>School of Dentistry Reaserch Center (DMRC)<br>Leishmaniasis Skin Disease Reaserch Center (SDLRC)<br>Water and Electrolytes Faculty of Medicine (WERC) |
| 138 | <b>ISFAHAN UNIVERSITY JOURNALS OF MEDICAL SCIENCES</b>  |
|     | Isfahan University of Medical Sciences<br>Meeting and Conference Halls of University of Medical sciences<br>Canteens Dining Halls Universit of Medlcal Sciences<br>Isfahan University Sports Facilities of Medical Sciences<br>Holding Celebrations and Student Ceremonies  |
| 160 | <b>THE UNIVERSITY ELITES</b>  |
|     | Isfahan University of Medical Sciences<br>Meeting and Conference Halls of University of Medical sciences<br>Canteens Dining Halls Universit of Medlcal Sciences<br>Isfahan University Sports Facilities of Medical Sciences<br>Holding Celebrations and Student Ceremonies  |

**YOUR EDUCATION,  
YOUR WAY**



# M A S S A G E F R O M T H E CHANCELLOR

**Praise for God who is the first teacher of humanity and sent his Prophets to the people with books and wisdom.**

The dynamic process of development in the 21st century will always make everyone strive and prepare for future developments. To play a constructive role in the process of change requires knowledge. As a cradle of knowledge, universities play an important role in setting the grounds for flourishing of knowledge, skills and attitudes in every community. An overview of the history of human systems shows that the future belongs to those who best learn and apply their knowledge. A successful university must be able to both train efficient human resources and develop new technologies. Although medical education in Isfahan, with its new academic

approach, started 70 years ago, this university has the legacy of the oldest medical school in the world with acknowledged reference textbooks. Hakim Abu Ali Sina's school, where his book on medicine "The Canon of Medicine" was written and taught, survives as a point of reference through the ages, and attests to the academic tradition of teaching medicine in Iran and Isfahan.

As one of the best universities in Iran, Isfahan University of Medical Sciences has always tried to create a dynamic and lively environment to motivate the students, and to provide appropriate facilities and employ experienced and reputed professors in order to contribute to the development of human society and to promote people's health as its mission.

According to my experience as a younger generation teacher, I stress that you consider two issues when entering the university: First, try to raise the public awareness and, secondly, to use this awareness to solve the community's problems.

I hope that Isfahan University of Medical Sciences, as a best-ranking and lasting university, can serve the right choice for people who love science, practice and peace.

*President of Isfahan University  
of Medical Sciences  
2018*

*Dr. Tahereh Changiz ,MD,PHD*



M M A A S S S A A G G E E F F R R O O M M T T H H E E  
CHANCELLOR



M E S S A G E F R O M T H E  
**VICE-CHANCELLOR**  
 O F E D U C A T I O N

With over 70 years of activity, Isfahan University of Medical Sciences is one of the greatest universities in the Islamic Republic of Iran. In addition to its location in the beautiful and historic city of Isfahan, it draws on 1000 years history of medicine initiated by its great scientist, Abu Ali Sina (Avicenna). The common campus of Isfahan University of Medical Sciences and the University of Isfahan is one of the largest and most beautiful campuses in Iran, encompassing 10 colleges and its largest educational hospital al-Zahra (sa). Over 71,000 students have graduated from this university and about nine thousand students are studying in graduate, post-graduate, and specialty programs. Its research institutes and centers have provided scholars with the opportunity to focus at the same time on research and training and to benefit from the existing opportunities offered in educational-clinical centers and health departments of the university to conduct applied and interventional research. The diversity and multiplicity of hospital units and the availability of various diagnostic and therapeutic equipment make it possible to provide the students with the most advanced diagnostic techniques and the patients with treatment. Having the benefit of about 900 faculty members – over 200 of them full professors – as one of the most influential universities, this university can accept interna-

tional students at different levels of education and from different countries across the world to get acquainted with the rich Iranian culture and historical attractions while studying at the university.

I strongly believe that you will enjoy this university as your first choice, and you will find your chosen field of study rewarding.

*Vice-Chancellor of Education, Isfahan University of Medical Sciences  
 2018*

*Dr. Mohammad Reza Sabri, MD*



M M E E S S S A A G G E E F F R R O O M M T T H H E E  
**VICE-CHANCELLOR**  
 O O F F E E D D U U C C A A T T I I O O N N

# W O R L D ' S ISFAHAN H I D D E N   J E W E L L

**I**SFAHAN, ancient province and old city in central Iran (Middle Pers. "Spahān," New Pers. "Esfahān"). Isfahan city has served as one of the most important urban centers on the Iranian Plateau since ancient times and has gained, over centuries of urbanization, many significant monuments; a number of Isfahan's monuments have been designated by UNESCO as world heritage sites.

Isfahan city, the capital of Isfahan Province, is located about 420 km south of Tehran, and is Persia's third largest city (after Tehran and Mashad) with a population of over 2.2 million in 2014, making it the second most populous metropolitan area in Iran after the capital Tehran.

It is not well known when exactly Isfahan was first established as a city. But, it is known that its origins go back more than 1,500 years.

While Isfahan grew considerably from the early 11th through the 18th century, it flourished particularly during the Safavid dynasty in the 16th century when it became the capital of the old Persia for the second time. Isfahan was once one of the largest cities in the world.





## WORLD'S ISFAHAN HIDDEN JEWELL

Isfahan may be well known for its beautiful historic Islamic architecture, But its talented people continue to produce many more works of art from its world famous Persian rugs to handicrafts and other unique products.

A river called Zayandeh Rood (life-giving river) runs through Isfahan giving the city and its residents more life! Isfahan has a seasonal climates. Summers could be very hot, but not humid, and winters not terribly cold. The total annual precipitation rarely exceeds five inches.

Isfahan's Imam Square, formerly known as the Naghsh-e Jahan (meaning portrait of the world) Square, is one of the largest city squares in the world. Around the square sit a number of world-famous marvels of Islamic architecture. The Imam Square is designated by UNESCO as a World Heritage Site.

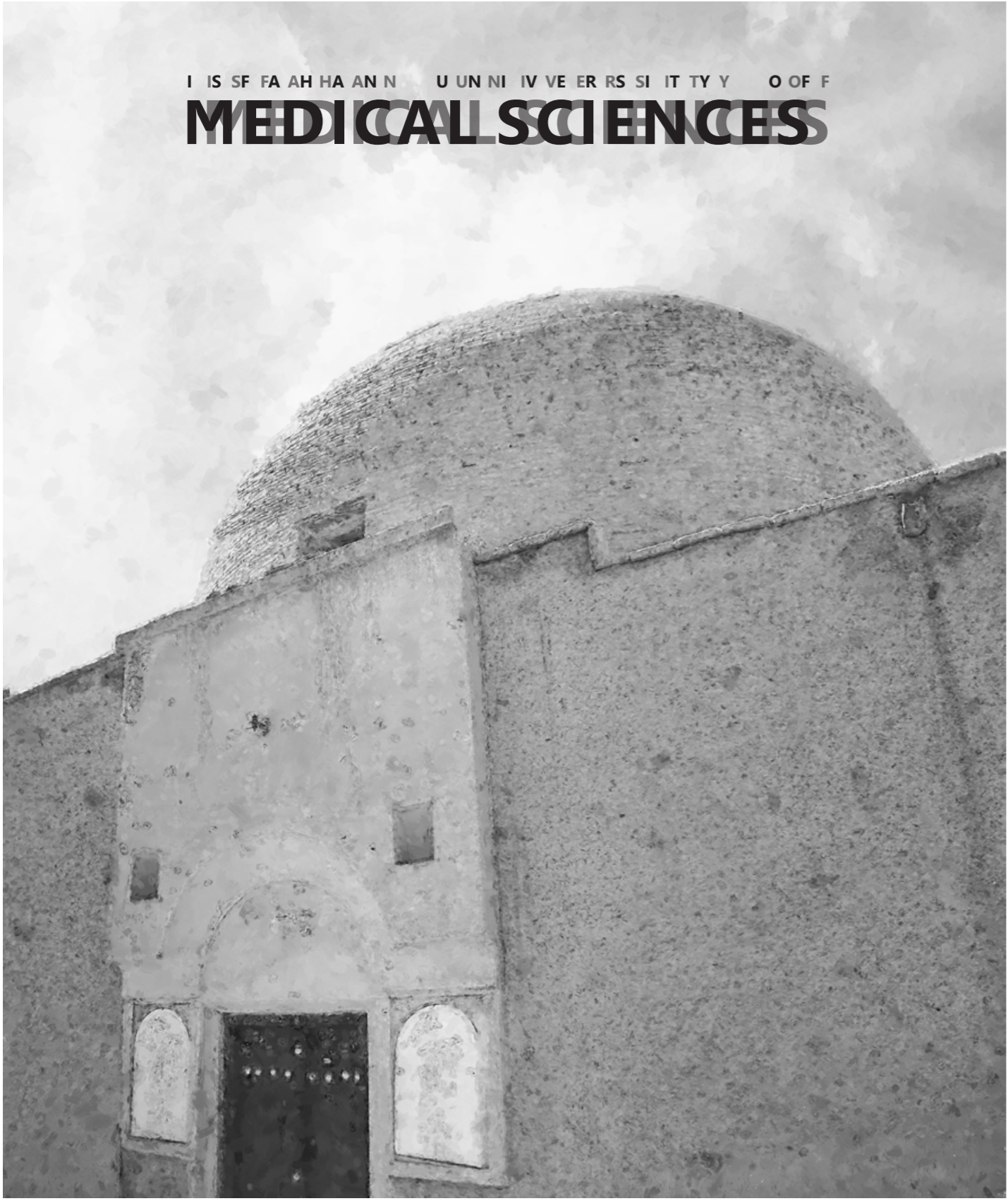
Many visitors believe Isfahan is the most beautiful city in Iran and one of the most beautiful in the world. It features numerous tree-lined boulevards and flower gardens, miles of beautiful parks along the Zayandeh Rood river; 1300 year-old covered bazaars, bridges, palaces, mosques, and minarets. No wonder Isfahan is called nesf-e jahān meaning half of the world. The city attract hundreds of thousands of visitors from all over Iran and around the world each year.



WORLD'S  
**ISFAHAN**  
HIDDEN JEWELL



I IS SF FA AH HA AN N U UN NI IV VE ER RS SI IT TY Y O OF F  
**MEDICAL SCIENCES**



■ Avicenna School



# ISFAHAN UNIVERSITY OF MEDICAL SCIENCES

**Isfahan University of Medical Sciences is a university specializing in basic medical sciences, clinical science, and health services, located in Isfahan, Iran.**

Isfahan University of Medical Sciences is one of the world's oldest universities. It is also one of the most prestigious Iranian medical schools. Admission to the university is limited to students with top scores on the national entrance examination, administered yearly by the Ministry of Science, Research and Technology (Iran).

Isfahan University of Medical Sciences was founded by Great Avicenna (Ibn\_sina), under the patronage of the Kakouid ruler Alla-al-Dowleh in 1024/1025. It soon became one of the leading educational centers of the historic Muslim world. Isfahan University of Medical Sciences, was established in 1946, as the Isfahan Higher School of Health Education. In 1950, the Isfahan Faculty of Medicine was inaugurated and students were admitted for the M.D. degrees after a 6-year medical training course. Today, the university campus is located on Hezarjarib Street in southern Isfahan.

**Isfahan** University of Medical Sciences provides undergraduate, graduate and postgraduate programs in 10 faculties and 75 main departments. The student body consists of about 10,000 students from all 31 provinces of Iran and some foreign countries. Funding for Isfahan University of Medical Sciences is provided by the government (via the ministry of health and medical education) and through some private investments.

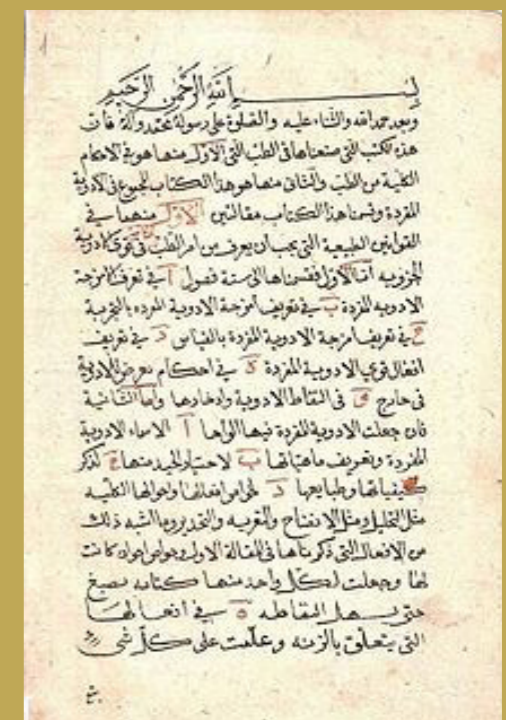
## History

To the north of the Isfahan city centre lies an area called Dardasht, formerly known as Bab-ol Dasht, through which the Khiaban-e-Ibn Sina (Avicenna st.) runs. This ancient 11th century dome traditionally marks the spot where the great Sheikh-al-Rais Ibn-e-Sina, or Avicenna, as he is known in the West, established his school of medicine under the patronage of the Kakouid ruler Alla-al-Dow-

leh Mohammad, who had conquered the town from the Deylamid rulers at the start of the 11th Century.

Teaching at the school began as early as 1024 under the name of "Alaii School" /Avicenna School, making Isfahan University of Medical Sciences the oldest medical university in the world and the world's second-oldest university in continuous operation.

■ 12th-century manuscript of the Canon kept at the Azerbaijan National Academy of Sciences



# ISFAHAN UNIVERSITY OF MEDICAL SCIENCES

Avicenna settled in Isfahan and authored a five-volume medical encyclopedia: the Canon of Medicine (Al-Qanun fi't-Tibb). It was used as the standard medical textbook in Isfahan, the Islamic world, India, and Europe until the 18th Century.

According to Abu Ubayd al-Juzjāni, a pupil and a close companion of Avicenna, the students used to gather at the residence of Sheikh al-Raiss (Avicenna's school) every night and would study his book of Canon and Shifā one by one under his instruction. The Canon still plays an important role in Iranian (Unani) medicine.

Avicenna (Ibn Sina) has been described as the "father of early modern medicine." He is credited with various medical observations and discoveries, such as recognizing the potential of airborne transmis-

sion of disease, providing insight into many psychiatric conditions, recommending the use of forceps in deliveries complicated by fetal distress, distinguishing central from peripheral facial paralysis, and describing guinea worm infection and trigeminal neuralgia. His works cover subjects including angiology, heart medicine, and treatment of kidney diseases.

Avicenna (Ibn Sina) was also a pioneer of experimental medicine, evidence-based medicine, pharmaceutical sciences, clinical pharmacology, aromatherapy, pulsology, and sphygmology.

The school of medicine in Isfahan by Avicenna became the representative of Islamic (Irani) medicine mainly through the influence of Ibn Sina's famous work al-Canon fi Tibb. The book was originally used as a textbook for instructors and students of medical sciences in the medical school of Avicenna.



■ Safavid lacquer work illustrating a physician taking the pulse of a patient. From a 17th-century copy of Avicenna's Canon of Medicine. Wellcome Library, London.

# ISFAHAN UNIVERSITY OF MEDICAL SCIENCES

Abu Ubayd al-Juzjani was a famous pupil of Avicenna. He spent many years with his master in Isfahan, becoming his lifetime companion. After Avicenna's death, he completed Avicenna's autobiography with a concluding section. He and the other students of Avicenna continued teaching in Avicenna's school in Isfahan.



■ The first page of a manuscript of Avicenna's Canon, dated 7/1596 (Yale, Medical Historical Library, Cushing Arabic ms. 5)



# ISFAHAN UNIVERSITY OF MEDICAL SCIENCES

Also, Ibn Miskawayh was a Persian chancery official of the era, and a philosopher and physician that taught in the Isfahan school of medicine. As a Neoplatonist, his influence on Islamic philosophy is primarily in the area of ethics. Ibn Miskawayh was one of the first to clearly describe a version of the idea of evolution.

The idea to establish the modern university came from doctors at the Amin Hospital in 1939. Finally, the hospital's board of directors approved a plan to establish the Isfahan Higher Institute of Health in 1946. Isfahan University of Medical Sciences was established as a modern institution in 1946 under the name "The Higher Institute of Health" and later was elevated to the "School of Medicine". In September of the same year, an ad signed by lecturer Dr. Jelveh, then caretaker of Isfahan Province Health and Medical Treatment Department, was published in local newspapers calling on pro-

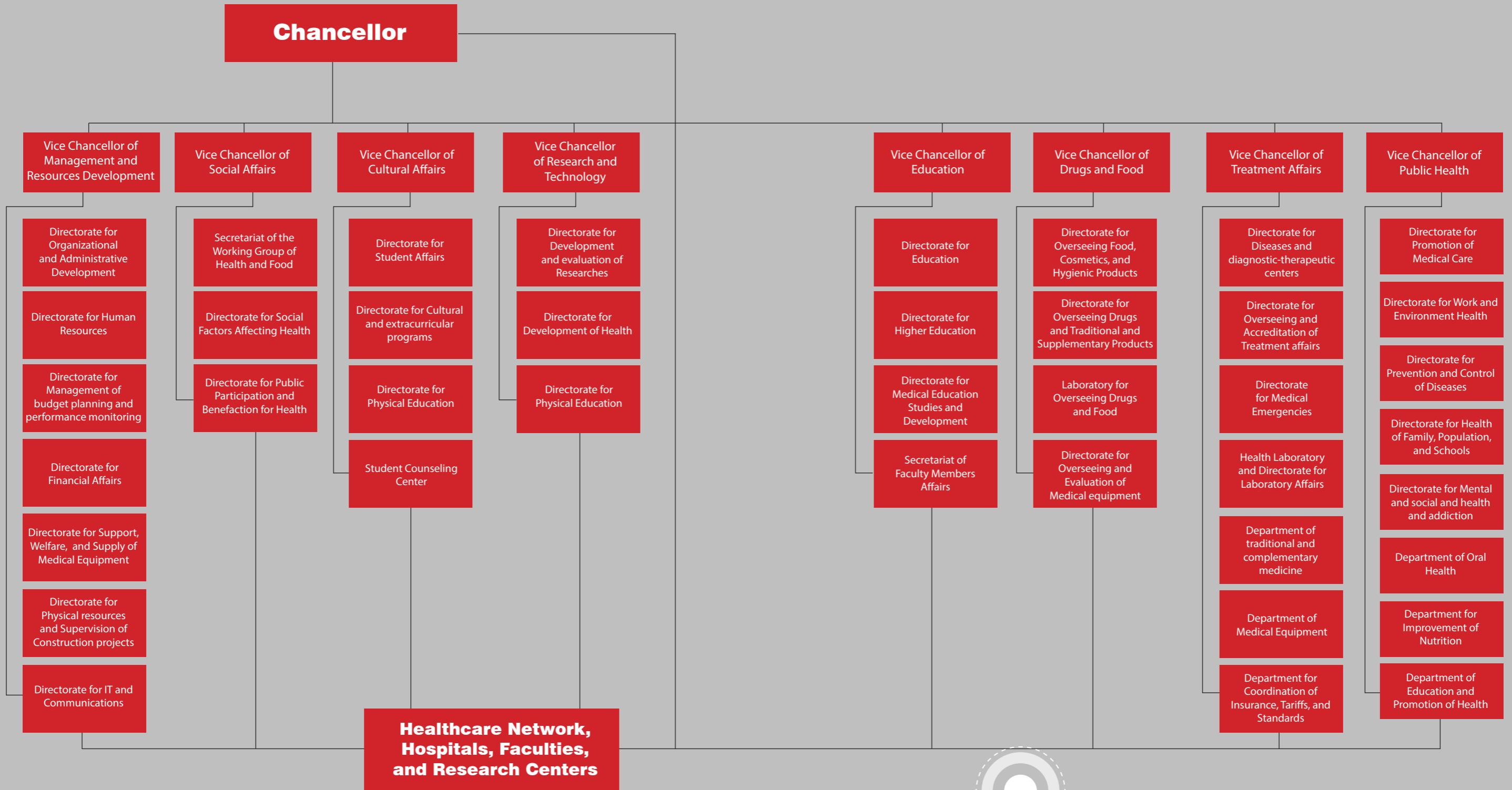
spective students to enroll in the new institute. The first classes were held at the old Sa'di High School (now the Soureh Institute). Many more students enrolled in subsequent years. Therefore, the institute had to find a larger campus to accommodate the growing number of new students. As a result, the Isfahan University was founded to accommodate these students and establish new faculties.

On October 29, 1950, the first series of classes were held at the new campus, named the University of Isfahan. The newly established school of Medicine at Sa'di School and Literature College on Shahzadeh Ebrahim Street joined the University of Isfahan and relocated themselves to the main campus.

The university later offered programs in human sciences, engineering and medical sciences. Related programs of medical sciences, although they were the parent programs of Isfahan University, were then separated from the University of Isfahan and became an independent university named Isfahan University of Medical Sciences in 1985.

With 10 teaching hospitals & and 81 departments, the university is currently a regional health care provider and the main medical center in Isfahan Province and central Iran.





# SCHOOLS



# ISFAHAN MEDICAL SCHOOL

This school is one of the world's oldest medical colleges and is one of the most prestigious Iranian medical schools. Admission to the school is limited to students with top scores on the national entrance examination, administered yearly by the Ministry of Science, Research and Technology of Iran. Medical school has several affiliated teaching hospitals such as Alzahra, Khorshid, Emam Mosa Kazem, Omid, Amin, Ayatollah Kashani, Shahid Beheshti, Shahid Chamran, Feiz, Emam Hossein. In addition, Isfahan medical school has advanced facilities for students. The large campus of Isfahan medical school is an attractive center of great repute in Iran and Central Asia. This school has several years of experience in establishing an international campus that offers programs for international students in different majors and degrees. Residency and fellowship programs are also offered to international students.

This school also offers (medical doctorate) MD degree program to international students.

## Departments

### Basic Sciences

| Department   | A.Sc | B.Sc. | M.Sc. | Ph.D.              |
|--|------|-------|-------|--------------------|
| Department of Immunology                             | -    | -     | ✓     | ✓                  |
| Department of Physiology                             | -    | -     | ✓     | ✓                  |
| Department of Anatomical Sciences                    | -    | -     | ✓     | ✓                  |
| Department of Microbiology and Virology              | -    | -     | ✓     | ✓                  |
| Department of Parasitology and Mycology              | -    | -     | ✓     | ✓                  |
| Department of Genetics and Molecular Biology         | -    | -     | ✓     | ✓                  |
| Department of Medical Physics                        | -    | -     | ✓     | ✓                  |
| Department of Islamic Education                      | -    | -     | -     | -                  |
| Department of Persian Medicine                       | -    | -     | -     | ✓                  |
| Department of Health Psychology                      | -    | -     | ✓     | -                  |
| Department of Surgery, Perfusion Technology Division | -    | -     | ✓     | -                  |
| Department of Pathology                              |      |       |       | Residency training |



# ISFAHAN MEDICAL SCHOOL

### Clinical Sciences

- Orthopedics
- Dermatology
- Internal Medicine
- Pediatrics
- Ophthalmology
- Social Medicine and family medicine
- Surgery
- Radiology
- Psychology
- Toxicology
- Infectious Disease
- Obstetrics and Gynecology
- Cardiology
- Emergency Medicine
- Traditional Medicine
- Otolaryngology
- Neurology
- Neurosurgery
- Radio-oncology
- Urology
- Medical Ethics
- Anesthesiology
- Physical Therapy and Rehabilitation

### Vision

Isfahan medical school will set the standard for education in the twenty-first century. We are committed to creating and sustaining the conditions through which our students will experience a journey that is intellectually, socially, and personally transformative.

### Mission

The mission of Isfahan medical school is to educate the leaders for our society. We do this through our commitment to the transformative power of education. We expose our students to new ideas, new ways of understanding, and new ways of knowledge, guiding them on a journey of intellectual transformation. Our students experience diverse living environment, where they meet people who are studying different topics, who come from different parts of the country and have evolving identities. Through these experiences, intellectual transformation is deepened and conditions for social transformation are created. From this we hope that students will gain a sense of what they want to do with their gifts and talents, assessing their values and interests, and learning how they can best serve the world.

**Facilities:** There are a lot of laboratories and educational facilities in this school. This school is equipped with cell culture laboratory.

### Some of important laboratory instruments are:

- Inverted microscope
- Gel documentation
- Microwave
- Handy sonic
- Homogenizer
- Ultrasonic water bath
- Thermomixer
- Electrophoresis tank
- Nano drop
- Spectrometer uv/vis
- Flow cytometry
- Real-time step one
- Real-time step one plus
- Fluorescent microscope
- Inverted fluorescent Microscope

| Total area (m <sup>2</sup> ) | Number of faculty member | Number of full professors | Number of under graduate students | Number of post-graduate students |
|------------------------------|--------------------------|---------------------------|-----------------------------------|----------------------------------|
| 36000                        | 599                      | 111                       | 2139                              | 1458                             |





# SCHOOL OF DENTISTRY

Isfahan School of Dentistry was established in 1974 and has been one of the best Iranian dental schools in recent years. The faculty departments offer both patient-care services and academic programs allowing dental students and dentists to receive training as general dentists and specialists. This school also offers (medical doctorate) MD degree program to international students.

## Departments

| Department                       | A.Sc | B.Sc. | M.Sc. | Ph.D. | Residency |
|----------------------------------|------|-------|-------|-------|-----------|
| Endodontic                       | -    | -     | -     | ✓     | ✓         |
| Oral and Maxillofacial Pathology | -    | -     | -     | -     | ✓         |
| Orthodontics                     | -    | -     | -     | -     | ✓         |
| Oral Medicine                    | -    | -     | -     | -     | ✓         |
| Periodontics                     | -    | -     | -     | -     | -         |
| Prosthodontics                   | -    | -     | -     | -     | -         |
| Restorative Dentistry            | -    | -     | -     | -     | -         |
| Pediatric Dentistry              | -    | -     | -     | -     | ✓         |
| Oral and Maxillofacial Radiology | -    | -     | -     | -     | ✓         |
| Community Oral Health            | -    | -     | -     | ✓     | -         |

## Vision

We are on the way to be among the best Dental Schools in the region and in the world regarding education and research in next 10 years.

## Mission

Training dentists and affiliated professions, providing care services, and improving the oral health of the community.



# SCHOOL OF DENTISTRY

[www.dnt.mui.ac.ir](http://www.dnt.mui.ac.ir)

## Facilities:

- 2 Equipped amphitheatres with 400 and 100 seats
- 430 dental units
- Equipped preclinical laboratory
- Equipped dental Prosthesis and Orthodontics laboratory
- Equipped Pathology laboratory
- Oral and maxillofacial radiology equipment:
  - CBCT
  - Panoramic & Cephalometric radiography
  - Sonography
  - Intra oral radiography
- Digital dentistry equipment
- Laser therapy equipment

In addition to different departments of the faculty, Practitioners have opportunity to provide general and specialty dental and maxillofacial treatment in the clinics that are under the supervision of the faculty.

These clinics are:

- Afzal clinic
- Ghaedi clinic
- Graduate students clinic.

| Total area (m <sup>2</sup> ) | Number of faculty member | Number of full professors | Number of under graduate students | Number of post-graduate students |
|------------------------------|--------------------------|---------------------------|-----------------------------------|----------------------------------|
| 7200                         | 112                      | 16                        | 696                               | 116                              |

# S C H O O L O F PHARMACY AND S C I E N C E S

The School of Pharmacy at Isfahan University of Medical Sciences is ranked among the Iranian's best for teaching, education and research. With more than 60 years of experience in delivering professional pharmacy education, we enjoy an excellent national and international reputation. This school offers Pharm. D degree program to international students.

## Departments

| Department                    | A.Sc | B.Sc. | M.Sc. | Ph.D. |
|-------------------------------|------|-------|-------|-------|
| Clinical Biochemistry         | -    | -     | ✓     | -     |
| Pharmaceutical Chemistry      | -    | -     | ✓     | -     |
| Toxicology                    | -    | -     | ✓     | -     |
| Medicinal Chemistry           | -    | -     | -     | ✓     |
| Pharmacology                  | -    | -     | -     | ✓     |
| Pharmaceutics                 | -    | -     | -     | ✓     |
| Clinical Pharmacy             | -    | -     | -     | ✓     |
| Clinical Biochemistry         | -    | -     | -     | ✓     |
| Pharmacognosy                 | -    | -     | -     | -     |
| Pharmaceutical Biotechnology  | -    | -     | -     | -     |
| Pharmaceutical Nanotechnology | -    | -     | -     | ✓     |



S C H O O L O F  
**PHARMACY AND  
PHARMACEUTICAL**  
S C I E N C E S  
[www.phram.mui.ac.ir](http://www.phram.mui.ac.ir)



SS CC HH OO OO LL  
**PHARMACY AND  
 PHARMACEUTICAL**  
 SS CC II EE NN CC EE SS

OO FF

[www.phram.mui.ac.ir](http://www.phram.mui.ac.ir)

**Facilities:**

- ultracentrifuges
- scintillation counters
- gamma counter
- liquid chromatographs, including HPLC-Mass, LC-Mass
- GC Mass spectroscopy
- computer-aided imaging equipment
- Spectroscopy instruments, including FTIR, UV, NMR
- Particle Size Analyzer
- cell culture facilities
- western blotting set-up
- fluorescent and uv/visible plate readers
- peptide synthesizer, fluorescence spectrometer
- Freeze drier
- Spray drier

**Vision**

The Isfahan School of Pharmacy will be a pioneer that enhances health countrywide and across the globe through innovation in pharmacy education, research and practice.

**Mission**

The School of Pharmacy improves health through innovative education, pioneering research, and interdisciplinary practice development that attends to the diverse needs of people.

| Total area (m <sup>2</sup> ) | Number of faculty member | Number of full professors | Number of under graduate students | Number of post-graduate students |
|------------------------------|--------------------------|---------------------------|-----------------------------------|----------------------------------|
| 12000                        | 55                       | 16                        | 768                               | 103                              |

# SCHOOL OF NURSING AND MIDWIFERY

**A**ffiliated with Isfahan University of Medical Sciences, School of Nursing and Midwifery is actively engaged in teaching students in nursing, midwifery and surgical technology. It is now one of the most prestigious schools in Iran with more than 50 years of experience in delivering professional Nursing and Midwifery education.

## Departments

| Department                                 | A.Sc | B.Sc. | M.Sc. | Ph.D. |
|--|------|-------|-------|-------|
| Department of Medical Surgical Nursing     | -    | ✓     | ✓     | ✓     |
| Department of psychiatric Nursing          | -    | ✓     | ✓     | ✓     |
| Department of Critical Care Nursing        | -    | ✓     | ✓     | ✓     |
| Department Neonatal Intensive care Nursing | -    | ✓     | ✓     | ✓     |
| Department Community Health Nursing        | -    | ✓     | ✓     | ✓     |
| Department Geriatric Nursing               | -    | ✓     | ✓     | ✓     |
| Department pediatric Nursing               | -    | ✓     | ✓     | ✓     |
| Department Midwifery                       | -    | ✓     | ✓     | -     |
| Department Reproductive Health             | -    | -     | ✓     | ✓     |
| Department Surgical Technology             | -    | ✓     | ✓     | -     |

## Vision

Following the principle of "healthy humans is centered for sustainable development" and with a view to "All things for Health", School of Nursing and Midwifery believes that with innovation in the training, research and culture, it maintains its first place in Iran and is at the same time one of the prestigious schools in the EMRO region.

## Mission

School of Nursing and Midwifery is one of the most prominent schools in Iran which is actively engaged in training of skilled, committed, creative, thoughtful, effective and efficient manpower in undergraduate, master's and Ph.D. programs for providing nursing services, midwifery and surgical technology in the areas of health, treatment, rehabilitation, training, management and support to different sections of society. It helps dynamism in professional graduates by offering educational and research services.



[www.nm.mui.ac.ir](http://www.nm.mui.ac.ir)

# SCHOOL OF NURSING AND MIDWIFERY

**Facilities:** Academic spaces of the faculty consist of clinical skills lab with six classes for teaching basic clinical skills as well as classes for physical exam, pediatric intensive skills, ICU, CCU, emergencies, midwifery, and health and surgical technology. It is well equipped with advanced educational simulators and facilitates by which students practice clinical procedures.

Three computer sites, a postgraduate department devoted to postgraduate students. A library and a regular and digital study hall are available to students.

| Total area (m <sup>2</sup> ) | Number of faculty members | Number of full professors | Number of undergraduate students | Number of post-graduate students |
|------------------------------|---------------------------|---------------------------|----------------------------------|----------------------------------|
| 8000                         | 82                        | 1                         | 1016                             | 306                              |

# SCHOOL OF REHABILITATION SCIENCES

**F**aculty of Rehabilitation Sciences was established in 1992 offering three undergraduate programmes together including speech therapy (ST), physiotherapy (PT), and orthotics and prosthetics (O&P). In the later years, occupational therapy (2008) and audiology (2012) were also offered in undergraduate programs. The first group of masters' students in ST were admitted in fall 2007 followed by admission of new students in the M.Sc. courses in PT and O&P in fall 2010. The faculty now intends to establish optometry course in undergraduate level and PhD for PT and ST in the near future.

## Departments

| Department                | A.Sc | B.Sc. | M.Sc. | Ph.D. |
|---------------------------|------|-------|-------|-------|
| Audiology                 | -    | ✓     | -     | -     |
| Occupational Therapy      | -    | ✓     | -     | -     |
| Orthotics and Prosthetics | -    | ✓     | ✓     | ✓     |
| Physiotherapy             | -    | ✓     | ✓     | ✓     |
| Speech Therapy            | -    | ✓     | ✓     | -     |



S S C C H H O O O O L L O O F F  
**REHABILITATION**  
S S C C I I E E N N C C E E S S

[www.rehab.mui.ac.ir](http://www.rehab.mui.ac.ir)



[www.rehab.mui.ac.ir](http://www.rehab.mui.ac.ir)

### Vision

Our vision is to turn into a leading core for national and internationally well-known rehabilitation centre in education, research and practice. Up to 30 percent of post-graduate theses are conducted in collaboration with national and international peers around the world from USA, Canada, Denmark, UK, Belgium, New Zealand, Australia, Finland, Sweden, Germany, Japan, Bahrain, etc. Our Vision is to secure the leading position among faculties of rehabilitation sciences in Middle East by 2024.

### Mission

1. To contribute to the advancement of knowledge in rehabilitation through participation in collaborative and interdisciplinary researches.
2. To facilitate the clinical trials and epidemiologic researches including large sample cohorts in order to develop national guidelines on rehabilitation protocols in various disorders and health conditions.
3. To communicate with rehabilitation technology suppliers to provide customer-friendly, evidence-based equipment for rehabilitation centers.
4. To facilitate development of innovative services and equipment by students and faculty members to deal with increasing geriatric population in the state and country and improving quality of life of the disabled population.
5. To communicate with governors and stakeholders in order to optimize the social and welfare laws, facilitate the active participation of disabled population in the state and country, reduce the rate of crush injuries and road and home accidents that result in physical disability and care dependency.
6. To improve the educational program at various levels for training independent qualified rehabilitation providers who play leading roles in academia, government and industry.



[www.rehab.mui.ac.ir](http://www.rehab.mui.ac.ir)

### Facilities:

- Audiology Clinic including four specialised clinics for hearing and balance assessment in children and adults.
- Occupational Clinic including five equipped clinics around Isfahan in which children and adults with mental and/or physical problems receive specialised services.
- Orthotics and Prosthetics Department consisting of five equipped clinics.
- Physiotherapy Clinic including seven clinics, two of them are neurological, one is specialised for burn patients, and one for patients who are hospitalised in ICU.
- Speech Therapy department including eight specialised clinics for people with a range of communication and swallowing disorders including developmental speech/language disorders, stuttering, cleft lip/palate, stroke and aphasia, literacy problems, etc.
- Educational facilities
  - Three conference rooms (one in each floor)
  - Twenty classrooms equipped with video projectors, computers, evaluation tables and other audio-visual equipment.
  - PhD stations
  - Student internet Café: with 16 computer sets
  - Science and technology club: a convenient atmosphere with facilities for team discussions and meetings
  - Library: with 4 computer sets and more than 3000 books and theses in rehabilitation sciences (the second top library of the MUI)
- A complex of clinics consisting of speech Therapy / Physiotherapy / Occupational Therapy / Audiology and Orthotics and Prosthetics clinics offer specialized clinical services to patients from the region and other parts of Iran.

| Total area (m <sup>2</sup> ) | Number of faculty members | Number of full professors | Number of under graduate students | Number of post-graduate students |
|------------------------------|---------------------------|---------------------------|-----------------------------------|----------------------------------|
| 14000                        | 40                        | -                         | 399                               | 107                              |

# SCHOOL OF NUTRITION AND FOOD SCIENCE

**N**utritional science department, first established in 1987, started working as a department in faculty of public health. In 2011, the School of Nutrition and Food Science was inaugurated.

## Departments

| Department                   | A.Sc | B.Sc. | M.Sc. | Ph.D. |
|------------------------------|------|-------|-------|-------|
| Nutritional Sciences         | -    | ✓     | ✓     | ✓     |
| Health Sciences in Nutrition | -    | -     | ✓     | -     |
| Health and Food Safety       | -    | -     | ✓     | -     |

## Vision

To become the pre-eminent school of Nutrition and Food Science in Isfahan University of Medical Sciences and finally measuring up to a country-level school for Food, Nutrition and Health through research, educating, and leadership in human nutrition.

## Mission

The purpose of the establishment of the school of Nutrition and Food Science in Isfahan University of Medical Sciences is as follows:

To use nutrition research, education and leadership as a key driver for enhancing the health, wellness and prosperity of individuals and populations, and achieving this will require significant growth and transformation.



SCHOOL OF  
**NUTRITION  
AND FOOD**  
SCIENCE

[www.nutr.mui.ac.ir](http://www.nutr.mui.ac.ir)

## Facilities:

### Laboratories

Four laboratories were inaugurated:

- Food Microbiology Lab: Food microbial control tests will be done
- Molecular Biology Lab: Molecular tests for epidemiologic studies, detection of microorganisms and protein macromolecules
- Nutrition Research Lab: Clinical and medical biochemical tests and medical diagnosis related to human
- Reference Lab: An accredited food testing laboratory, working in collaboration with Food and Drug administration of Isfahan university of medical sciences

### Equipment of Laboratories

1. Pulse-Field Gel Electrophoresis
2. Serum Autoanalyser
3. High-performance liquid chromatography (HPLC)
4. Termocycler
5. Inductively coupled optical emission spectrometry (ICP-OES)
6. Fiber Optic Lab Equipment, Peco food, Iran
7. Protein Digestion Apparatus
8. Kjeldahl Distillation Apparatus
9. Freezer -80 °C, Sanyo, Japan
10. Spectrophotometer, Cecil, United Kingdom
11. Refractometer
12. Soxhlet device
13. Eliza reader
14. Elctophoresis Equipment

| Total area (m <sup>2</sup> ) | Number of faculty members | Number of full professors | Number of under graduate students | Number of post-graduate students |
|------------------------------|---------------------------|---------------------------|-----------------------------------|----------------------------------|
| 1200                         | 12                        | 2                         | 163                               | 98                               |

# SCHOOL OF HEALTH

The School of Health is one of the prestigious schools in Iran established in 1968. This school is actively engaged in research and teaching across a wide range of topics, covering health education and community health improvement, environmental health engineering, occupational health and safety, biostatistics and epidemiology. Our integrated programs of study offer exciting opportunities to work alongside research leaders and to develop the skills and knowledge required by future decision-makers. With access to several analytical laboratories, pilot scale facilities, and supporting expertise, the school provides bespoke services, ranging from one-off activities to long-term collaborations with the industry and other research bodies.

## Departments

| Department                       | A.Sc | B.Sc. | M.Sc. | Ph.D. |
|----------------------------------|------|-------|-------|-------|
| Environmental Health Engineering | -    | ✓     | ✓     | ✓     |
| Occupational Health Engineering  | -    | ✓     | ✓     | ✓     |
| Health Education and promotion   | -    | ✓     | ✓     | ✓     |
| Epidemiology and Biostatistic    | -    | -     | ✓     | ✓     |

## Vision

Healthy people in sustainable societies in the Isfahan province and Iran

## Mission

- Educate health professional educators and researcher
- Improve knowledge and strategies in the field of health
- Promotion of Health and welfare in Isfahan province and Iran



# SCHOOL OF HEALTH

[www.hlth.mui.ac.ir](http://www.hlth.mui.ac.ir)

## Facilities:

- Laboratory of Physical Factors
- Laboratory of Chemical Agents
- Industrial Safety Laboratory and workshop
- Ergonomics Lab
- Laboratory of Industrial Ventilation
- Toxicology laboratory
- Laboratory of Occupational Medicine
- Central Instrumental analytical laboratory
- Air pollution Laboratory
- Microbiology Laboratory
- Environmental Chemistry laboratory
- Environmental toxicology laboratory

High-performance liquid chromatography (HPLC-UV&IR), High-performance liquid chromatography (HPLC-UV&FL), Atomic absorption instrument (flame), Ultrasonic instrument, Mili Q water instrument, Hydrogen gas generator, Nitrogen and oxygen generator, Rotary Evaporator instrument, Freezer -80°C, Testo Flue gas Analyzer, Aerosol indoor sampler, High volume dust sampler, Wet gas meter, PCR thermo cycler, Incubator with refrigerator, Shaker with incubator, CO2 incubator, Benmary, Spectrophotometer UV-Vis, Spectrophotometer DR5000, Spectrophotometer DR2500, Flame photometer, BOD meter, COD meter

## Some Important Instruments Used in These Laboratories:

Gas Chromatography instrument (ECD &-FID GC), Gas Chromatography-Mass Spectrometry,

| Total area (m <sup>2</sup> ) | Number of faculty members | Number of full professors | Number of under graduate students | Number of post-graduate students |
|------------------------------|---------------------------|---------------------------|-----------------------------------|----------------------------------|
| 7200                         | 32                        | 7                         | 351                               | 214                              |



# SCHOOL OF ADVANCED TECHNOLOGIES IN MEDICINE

The School of Advanced Technologies in Medicine (ATM) was established to promote state of the art education, research and training in multidisciplinary and emerging sciences. The main core of this school was established in 1999, as “group of physics and biomedical engineering” in the school of medicine. The group was then promoted to its current form as “School of Advanced Technologies in Medicine” in 2012. The fields offered here are aimed to fill the gap between university and industry in medical sciences. The fast progress of knowledge in different branches of science and also the applications of advanced medical technology in modern medicine strongly necessitate it to have scientists and professionals in this field to prevent, diagnose and treat diseases to high standards. The graduate students have lots of promising opportunities and career prospects. You can find exciting work as clinical engineer/scientist, medical device developer, biomaterial engineer, or have opportunity to pursue a career of teaching in top universities.

## Departments

| Department                | A.Sc | B.Sc. | M.Sc. | Ph.D. |
|---------------------------|------|-------|-------|-------|
| Bioelectrical engineering | -    | -     | ✓     | ✓     |
| Biomaterial engineering   | -    | -     | ✓     | -     |

## Vision

Through its departments, ATM creates engineering knowledge and novel biomedical technology that improve the human condition through the advancement of clinical care and biomedical science.

## Mission

The mission of the ATM is to bridge engineering, science and medicine

- To educate and train the next diverse generation of interdisciplinary biomedical sciences
- To create enabling technologies for the improvement of human health and health care
- To translate scientific discovery and medical technology to industry or clinical practice for delivery of health care
- To engage with the local to global community of medical researchers to identify important problems that impact human health and solve them using our technical expertise.

## Facilities:

The school is equipped will a broad category of labs to fulfill the needs of students and researchers from this school and to provide the service to researchers from other faculties and universities:

- Bioinformatics Laboratory
- Biomaterials Laboratory
- Tissue Engineering Laboratory
- Bioinstrument Laboratory
- Medical Electronic Laboratory
- Biomedical Signal Processing Laboratory
- Microscopic image analysis Laboratory
- Ophthalmology Image Analysis Laboratory
- Medical signal and image Modeling Laboratory
- Game and treatment Laboratory
- Drug design Laboratory

| Total area (m <sup>2</sup> ) | Number of faculty members | Number of full professors | Number of under graduate students | Number of post-graduate students |
|------------------------------|---------------------------|---------------------------|-----------------------------------|----------------------------------|
| 1916                         | 11                        | 3                         | -                                 | 61                               |



# SCHOOL OF MANAGEMENT AND MEDICAL INFORMATION

The faculty of Management and Medical Information was established following the approval of the Supreme Council of Universities Development in October 1993. Initially, the faculty offered undergraduate courses. Later, in 2005, postgraduate unit was launched and started introducing postgraduate courses. In 2013, doctoral students were admitted as well. By training specialist staff members, this faculty is one of the centers that plays a basic role in maintaining and promoting the health of the society that is the ultimate goal of the Ministry of Health and Medical Education.

## Departments

| Department                               | A.Sc | B.Sc. | M.Sc. | Ph.D. |
|--|------|-------|-------|-------|
| Healthcare Services Management           | -    | ✓     | ✓     | ✓     |
| Medical Library and Information Sciences | -    | ✓     | ✓     | ✓     |
| Health Disaster Management               | -    | ✓     | ✓     | ✓     |
| Health Information Technology            | -    | ✓     | ✓     | ✓     |
| Social Welfare                           | -    | -     | ✓     | -     |

## Vision

The faculty of Management and Medical Information is a pioneer in Education, production and dissemination of useful sciences, pushing the boundaries of knowledge and technology on a global scale while preserving their scientific authority and Islamic identity in the country; and having dynamic and constructive interactions with scientific healthcare centers nationally and internationally.

## Mission

To train committed and pious human resources in the following fields: Management of Healthcare Services, Health Information Technology Management, Medical Library and Information Sciences and to do applied researches in the specialized fields to answer challenges in health system in order to achieve the preservation and promotion of social health.



SCHOOL OF  
**MANAGEMENT**  
AND MEDICAL INFORMATION

[www.mng.mui.ac.ir](http://www.mng.mui.ac.ir)

## Facilities:

Academic spaces of the faculty consist of well-equipped computer sites, 4 practical skills centers, English language laboratory, 3 special sites devoted to postgraduate students, classrooms, etc. A library and a regular and digital study hall are available to clients.

| Total area (m <sup>2</sup> ) | Number of faculty members | Number of full professors | Number of under graduate students | Number of post-graduate students |
|------------------------------|---------------------------|---------------------------|-----------------------------------|----------------------------------|
| 24000                        | 40                        | 2                         | 211                               | 123                              |



# TADBIR INTERNATIONAL

CC OO LL LL EE GG EE

## TADBIR INTERNATIONAL COLLEGE

**T**adbir building, an apt space with facilities such as equipped classrooms, computer hall, study halls and conference halls, is open to international students in various fields including medicine, dentistry, pharmacy, nursing and midwifery, health and rehabilitation in different programs.



# MEDICAL EDUCATION DEVELOPMENT CENTRE

The Medical Education Development Center is located in a 3-floor building at the Isfahan University of Medical Sciences and Health Services (MUI). The former was established in 1988 in response to the growing demand of faculty development and an up-to-date curricula, innovative teaching and evaluation methods. At present, this center is considered as one of the pioneer centers in Iran. It is also known as one of the Educational Poles in the country.

## Mission

The mission of Medical Education Development Center of MUI Sciences, as a division of Vice-Chancellery for Education, is to technically and scientifically support different educational activities through guiding, planning and supervising. This center is also responsible for faculty development, educational evaluation, curriculum development, educational researches, promotion of teaching and learning and providing MS and PhD courses in Medical Education.

## Vision

The Medical Education Development Center of MUI, will act as a prominent center in the country and region, in respecting scientific principles of medical education and the values of Islamic Republic of Iran.

### The main units of MEDC and the centers which act under the supervision of MEDC include:

- Curriculum Development Unit
- Faculty Development Unit
- Evaluation Office
- Clinical Education Unit
- Department of Medical Education
- Educational Scholarship unit
- Talented Students' Office (TSO)
- Virtual Education Center (E-learning Center)
- Clinical Skills Learning Center



# MEDICAL EDUCATION DEVELOPMENT CENTRE

### 1. Curriculum Development Unit

Consultation for designing and revision of educational curricula according to community needs and job description of health professionals.

### 2. Faculty Development Unit

To improve the quality of teaching in the university, the unit runs more than 50 faculty development workshops each year in different fields of education and research based on the needs of faculty members.

### 3. Evaluation Office

As any educational process requires regular evaluation, the highly qualified evaluators of the center evaluate the procedures, performances and programs by means of several methodologies in three main categories: Program Evaluation, Teacher Evaluation and Student Assessment.

### 4. Clinical Education Unit

The main focus of this unit is to promote teaching and learning in clinical education and perform this through different tasks such as running workshops on teaching and learning in clinical settings, providing consultation for faculty members and staff, designing and performing researches in the field of medical education, and developing interventional programs for

promoting clinical education.

### 5. Department of Medical Education

The unit offers PhD and M.S degree in Medical Education and benefits from nine full-time faculty members and about 12 part-time members. Also adjunct faculties from other Iranian medical universities collaborate with Isfahan EDC. The department also runs faculty development workshops on different topics of Medical Education for the university.

### 6. Educational Scholarship Unit

The goal of this unit is to promote innovational activities in different fields of medical education. Through participation of medical education experts and authorities, the specialty committee for scholarship in education examines faculty members' innovational activities in curriculum development, teaching and learning, educational evaluation, leadership and management and, e-learning based on GLASSIK criteria and gives some credits to this kind of activities which can be used in faculty members promotion.

### 7. Talented Students' Office (TSO)

Major objectives of the office are: recognizing talented students in different faculties according to the approved criteria, guiding the talent-

ed students and organizing them regarding the country's priorities, and providing support and facilities to help them develop and grow according to their interest.

### 8. Virtual Education Center (E-learning Center)

Equipped with a high-tech audio and visual studio, this center provides different facilities for preparing e-learning materials for formal courses, CME (Continuing Medical Education) programs and faculty development programs.

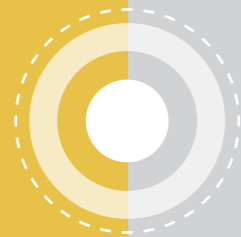
### 9. Clinical Skills Learning Center

The resources and facilities in this center include: 10 large and small rooms, 17 partition rooms, more than 100 manikins and other equipment, and two halls for large group activities. Some learning activities which take place in this center include physical examination of different manikins and simulated patients, procedures such as suturing, placing urinary catheter, performing CPR, practicing Endoscopy, delivering babies, etc.



A F F I L I A T E D  
**HOSPITALS**

**M**UI medical school governs several teaching hospitals which provide health services for the people of Isfahan province and also neighboring provinces. Medical, nursing and paramedical students, interns and residents are trained in these hospitals.



A A F F F I L L I A A T T E E D D  
**HOSPITALS**

# ALZAHRA(SA) H O S P I T A L

## General Hospital

### Medical services:

**Surgical wards:** Head and Neck Surgery, Neurosurgery, Obstetrics and Gynecology, Orthopedics, General Pediatrics, Thoracic surgery, Urology, Vascular surgery, Laparoscopic surgery, Ear, Nose, and Throat (ENT), Organ Transplant, Plastic and Cosmetic surgery and Orthopedics.

### Internal wards:

Gastroenterology, Respiratory, Neurology, Dermatology, Rheumatology, Hematology, Cardiology, Oncology, Endocrinology, Infectious Diseases, and Nephrology.

### Intensive care unit (ICU) wards:

Surgery, Respiratory, Neurosurgery, Internal, Hemodialysis, Peritoneal Dialysis and Stroke Care Unit.

### Laboratory services:

Genetics, Fetal and Neonatal Screening, Immunology and Pathology, Microbiology, Blood Bank and Biochemistry.

**Number of beds:** 931(Approved)

**Address/Map:** Soffeh St., Isfahan, Iran

**Contact info:** +983137923017



G G E E N N E E R R A A L L  
**HOSPITAL**



O P H T H A L M O L O G Y  
**HOSPITAL**

# FEIZ HOSPITAL

## Ophthalmology Hospital

### Medical services:

**Surgical wards:** Ophthalmology

### Internal wards:

Cardiovascular, Gastroenterology and Internal Medicine

### Laboratory services:

Biochemistry Pathology, Hematology, Microbiology, Parasitology and Blood Bank

### Other Para-clinical Services:

All related to Vitreous, Retina, Cornea, Oculoplastic surgery, Glaucoma, Uvea

**Number of beds:** 150 (Approved)

**Address:** Modarres st. Qods sq. Isfahan, Iran

**Contact info:** +98 3134452033-5



# DR. CHAMRAN H O S P I T A L

## Cardiology Hospital

### Medical services:

**Surgical wards:** Open Heart Surgery

**Internal wards:**  
Cardiology, Pediatric Cardiology, CCU and Hemodialysis

**Intervention Wards:** Angiography and EPS

**Intensive care unit wards:** ICUs and PICU

**Laboratory services:**  
Biochemistry, Blood bank, Microbiology & Immunology

**Other Para-clinical Services:**  
Ultrasonography and Radiology, echocardiography, Tilt Test Unit, Exercise Test,  
Electrophysiological Studies, Holter Monitoring

**Number of beds:** 192 (Approved)

**Address:** Moshtagh St., Isfahan, Iran  
**Contact info:** +983132600961-5

# CCARRDDIIOOLLOOGGY HOSPITAL

مرکز تخصصی آموزشی درمانی قلب شهید چمران



# KHORSHID HOSPITAL

## General Hospital

### Medical Services:

#### Surgical wards:

General Surgery, Urology and Cardiac Surgery

#### Internal wards:

Internal medicine, Cardiovascular, Psychiatry and Toxicology, Gastroenterology, Respiratory, Neurology, Rheumatology, Nephrology and Endocrinology

#### Laboratory Services:

Biochemistry, Pathology, Blood Bank, Serology, Immunology, Cytology, Hormonology, Urology, Microbiology, Parasitology, Hematology

#### Other Para-clinical Services:

Nuclear medicine (gamma scan), CT Scan, Imaging, Non Invasive Cardiac Test, Pulmonary Function Test, Sleep Test, Endoscopy, Colonoscopy, ERCP, EEG, Urodynamic, EMG, ECT, Angiography, Angioplasty, Cardiac Stress Test

**Number of beds:** 276 (approved)

**Address:** Ostandari St., Hasht Behesht Ave., Isfahan, Iran

**Contact info:** +983132222127

GG E E N N E E R R A A L L  
HOSPITAL





## AMIN HOSPITAL

### General Hospital

#### Medical Services:

#### Surgical wards:

general Surgery, Orthopedics, Urology, Obstetrics and Gynecology and ENT  
Internal wards: Neurology, Maternity Care, Internal Diseases Care, Neonatal and Pediatrics, Heart disease and Nephrology

#### Laboratory services:

Hormonology, Parasitology, Serology, Hematology, Bacteriology, Biochemistry and Blood Bank

#### Other Para-clinical Services:

Endoscopy and Colonoscopy, radiology MRI-CT Scan, Sonography, Mammography, Spirometry, Physiotherapy, ECG, EMG, EEG, Echocardiography and Exercise Stress Test.

**Number of beds:** 152(approved)

**Address:** Amin Hospital, EbneSina st, Shohada Sq, Isfahan, Iran.

**Contact info:** 031-34455051-9

# AYATOLLAH KASHANI HOSPITAL

## Trauma Hospital

### Medical Services:

#### **S**urgical wards:

General Surgery, Facial Surgery, ENT, Orthopedics and Neurosurgery

**Internal wards:** Neurology, Emergency Medicine,

#### **Laboratory Services:**

Biochemistry, Pathology, Blood Bank, Serology, Immunology, Cytology, Hormonology, Urology, Microbiology, Parasitology, Hematology

#### **Other Para-clinical Services:**

Speech Therapy, Audiometry, Anesthesiology, Radiology and Imaging (MRI, CT scan, Sonography) and physical therapy

**Number of beds:** 394 (approved)

**Address:** Ayatollah Kashani St. Isfahan, Iran.

**Contact info:** +9831323330091-6

T T E E A A C C H H I I N N G G  
**HOSPITAL**

ISFAHAN UNIVERSITY OF MEDICAL SCIENCES | 71 |

# IMAM HOSSEIN(AS)

H O S P I T A L

## Children Hospital

### Pediatric Medical Services:

#### **S**urgical wards:

Pediatric, Cleft lip and palate and Plastic, pediatric Urology and Pediatric Neurosurgery

#### **I**nternal wards:

Pediatric Neurology, Nephrology, Endocrinology, Pulmonology, Infectious diseases, Cardiology, Gastroenterology, Immunology, PICU and NICU

#### **L**aboratory Services:

Pathology, Biochemistry, Hematology, Microbiology, Serology, Blood bank

**Number of beds:** 160 (approved)

**Address:** Isfahan – Km 10 Imam Khomeini Street

**Contact info:** +983113876002

# DR. BEHESHTI

H O S P I T A L

## OB/Gyn Hospital

### Medical services:

**Surgical wards:**  
Obstetrics, Gynecology, General Surgery

**Internal wards:**  
Internal Medicine, Infertility and Labor  
Intensive care unit (ICU) wards: ICU and NICU

**Laboratory services:**  
Infertility Laboratory: IUI, IVF, ICSI, Anatomical, Pathological,  
Genetic

**Number of beds:** 180(approved)

**Address:** Motahari Street, Felezi BRG. Isfahan.  
**Contact info:** +983132367001

OO BB // GG YY NN  
**HOSPITALS**



# IMAM MOSA KAZEM (AS) H O S P I T A L

## Burn Hospital

### Medical services:

**Surgical wards:** Plastic Surgery, Burn Surgery and General Surgery

**Internal wards:** Burn and Hemodialysis

**Intensive care unit:** BICU

### Laboratory service:

Hematology - Biochemistry - Serology - hormone test - Urine analysis - Microbiology - Blood Bank - Parasitology

### Other Para-clinical Services:

radiology - ultrasonography - physiotherapy

**Number of beds:** 120 (approved)

**Address:** Kaveh St., Isfahan. Iran

**Contact info:** 5-33457670

B B u u r r n n  
HOSPITAL

# SEYYED-AL-SHOHADA(AS) H O S P I T A L

## Hematology, Oncology & Radiotherapy Hospital

### Medical services

**Surgical wards:** General Surgery

**Internal wards:** Adult and Pediatric Hematology and Oncology, Radiotherapy, Thalassemia and Hemophilia

**Intensive care unit:** ICU

**Laboratory services:** Hematology, Biochemistry, flow cytometry, pathology, Serology and Hormone test

### Other Para-clinical Services:

CT-Scan, MRI, PET scan,

**Number of beds:** 160(approved)

**Address:** Farshady St., Isfahan. Iran

**Contact info:** 983132350210-19



HEMATOLOGY, ONCOLOGY & RADIO THERAPY  
**HOSPITAL**



MUI

Isfahan University of Medical  
Sciences (IUMS) Science and  
Technology Park

If DYS424 is 12 and DYS392 is not 11, one is p  
robably a member of haplogroup R1b.

SS CC II EE NN CC EE AA NN DD  
**TECHNOLOGY**  
PP AA RR KK

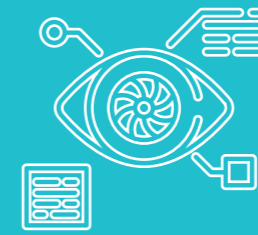
MUI

If DYS424 is 12 and DYS392  
is not 11, one is p  
robably a member of  
haplogroup R1b.

MUI

If DYS424 is 11 and DYS392 is 12,  
your haplotype for G shown above.

MUI



S C I E N C E A N D  
**TECHNOLOGY**  
P A R K

### Science and Technology Park

**H**emmat Park, authorized by the Ministry of health and medical education, officially started its operation in 2009 to create appropriate infrastructures for health technology development.

The park encompasses two incubator centers and a multi-tenant building for entrepreneur companies (graduated companies from incubators).

Our vision is organizing an international hub for life science technology innovation, tech-based entrepreneurship and high-tech businesses. In this respect, we tried to provide an appropriate environment for professional presence of small and medium technical

companies and research and development offices established by innovators. One of our major goals is to effectively interconnect companies, universities, research centers and large industries.

We support tech-based entrepreneurship teams by training, mentorship, funding and connection to the other tech innovation ecosystems.

We facilitate commercialization of scientific research through collaboration with private sector.

We also try to create job opportunities for universities graduates, researchers and provide internship opportunities.

SS CC II EE NN CC EE AA NN DD  
**TECHNOLOGY**  
PP AA RR KK



CC O O M M P P R R E E H H E E N N S S I I V V E E  
**RESEARCH LAB**

# C O M P R E H E N S I V E RESEARCH LAB

## Introduction of the Laboratory

**W**ith the support of the Research and Technology deputy of the Ministry of Health and Medical Education, the comprehensive laboratory of Isfahan University of Medical Sciences was established in 2009 to facilitate the process of research and deployment of advanced laboratory equipment in Isfahan University of Medical Sciences. It was inaugurated on June 17, 2014. Isfahan University of Medical Sciences is one of the 8 selected first-ranked universities enjoying such laboratorial option. This lab has the benefit of high-tech devices.

## Laboratory objectives

- Provide services and increase productivity in meeting research needs and provide research and equipment services at a high level to the faculty members, experts and researchers of Isfahan University of Medical Sciences and other recipient colleges.
- Offer consultation to other university laboratories for establishment of laboratory quality control systems. Develop and strengthen a network approach for research-related laboratory activities.
- Develop techniques to enhance the university's research capabilities

## Laboratory equipment

- Gas Chromatography - Mass Spectrometry / Mass Spectrometry (GC-MS / MS)
- Flow cytometry
- High Performance Thin Layer Chromatography (HPTLC)
- High Performance Liquid Chromatography (DHPLC)
- Elemental Analyzer (CHNSO)
- Simultaneous Thermal Analysis (STA)
- Atomic Force Microscopy (AFM)
- Scanning Tunneling Microscope (STM)
- Atomic Force Microscopy (SAI)



C C O O M M P P R R E E H H E E N N S S I I V V E E

RESEARCH LAB



**RESEARCH**  
IINNSSTTIITTUUTTEESS



# ISFAHAN CARDIOVASCULAR RESEARCH INSTITUTE

Isfahan Cardiovascular Research Institute (ICRI) was established in 2011 by joint collaboration of seven research centers:  
Isfahan Cardiovascular Research Center  
Cardiac Rehabilitation Research Center  
Hypertension Research Center  
Heart Failure Research Center  
Applied Physiology Research Center  
Interventional Cardiology Research Center  
Pediatric Cardiology Research Center

## Vision

To stand as the superior pole of research institute for the prevention and control of cardiovascular diseases in the Middle East, such that documents and reports provided by this institute are cited by international communities.

## Research areas

Preventive Cardiology, risk factors  
Cardiac Rehabilitation and Secondary Prevention  
Hypertension  
Heart Failure  
Basic sciences in Atherosclerosis  
Interventional Cardiology  
Community-based and Cohort studies  
Clinical trials on medications for CVD  
Cardiovascular diseases registries  
Obesity and Nutritional Research specially salt and fat in adult and childhood  
Studies on environmental factors like air pollution and CVD  
Psycho-cardiology  
Cardiotoxicity after cancer therapy  
Cardiovascular and cancer shared factors



ISFAHAN  
CARDIOVASCULAR  
RESEARCH INSTITUTE

# I S F A H A N CARDIOVASCULAR R E S E A R C H I N S T I T U T E

## Research facilities:

### Joint collaboration with other centers and institutions

#### WHO collaborating center from 2003

Performing many multi-centric studies with many International & National academic centers and Institutes

Ph.D. by research program from qualified GPs, nursing MSc, public health MSc, ... Database for large projects (Isfahan Healthy Heart Program (IHHP), Isfahan Cohort study (ICS)-Surveillance- PURE Study, rehabilitation- hypertension studies, salt studies, Air pollution studies, PROVE for different registries....

Some Main laboratory equipment: Research; Cardiovascular Research Institute Gas Chromatography, Spectrophotometer (GC), Ultracentrifuge (Spect), Bioreactor, 3D Dielectrophoresis, Fraction collector (Ultra), Peristaltic pump, Homogenizer, Ultrasonic Baths

PH-meter, Soxhlet extractor, Gel Dryer, Incubator, Digital balance, Real-time PCR, UV detector, PCR thermocycler, Microcentrifuge, CO2 incubator, Laminar flow, Shaker, Gel electrophorus, Echocardiography, Exercise test, Holter (heart and blood pressure monitoring)

Active clinics for prevention and control of smoking and nutrition

### Important Studies:

Isfahan Healthy Heart Program (IHHP study)

Isfahan Cohort Study (ICS study)

Design & Implementation of National Registry of Cardiovascular Disease & Coronary Interventions (PROVE Study)

Prospective Urban and Rural Epidemiological Study (PURE Study) in cooperation with MC Master University, Canada.

Grant for "The Correlation of Air pollution with Hospitalization and mortality of Cardiovascular and Respiratory Diseases in Isfahan in 2010, 2011" with environment department (CAPACITY Study)

International Atherosclerosis Society grant for "Comprehensive intervention strategies to improve the public and health care providers' knowledge and practice of dyslipidemia management, prevention and control" (LIPOKAP study)

# I I S S F F A A H H A A N N CARDIOVASCULAR R R E E S S E E A A R R C C H H I N N S S T T I I T T U U T T E E

### Patents

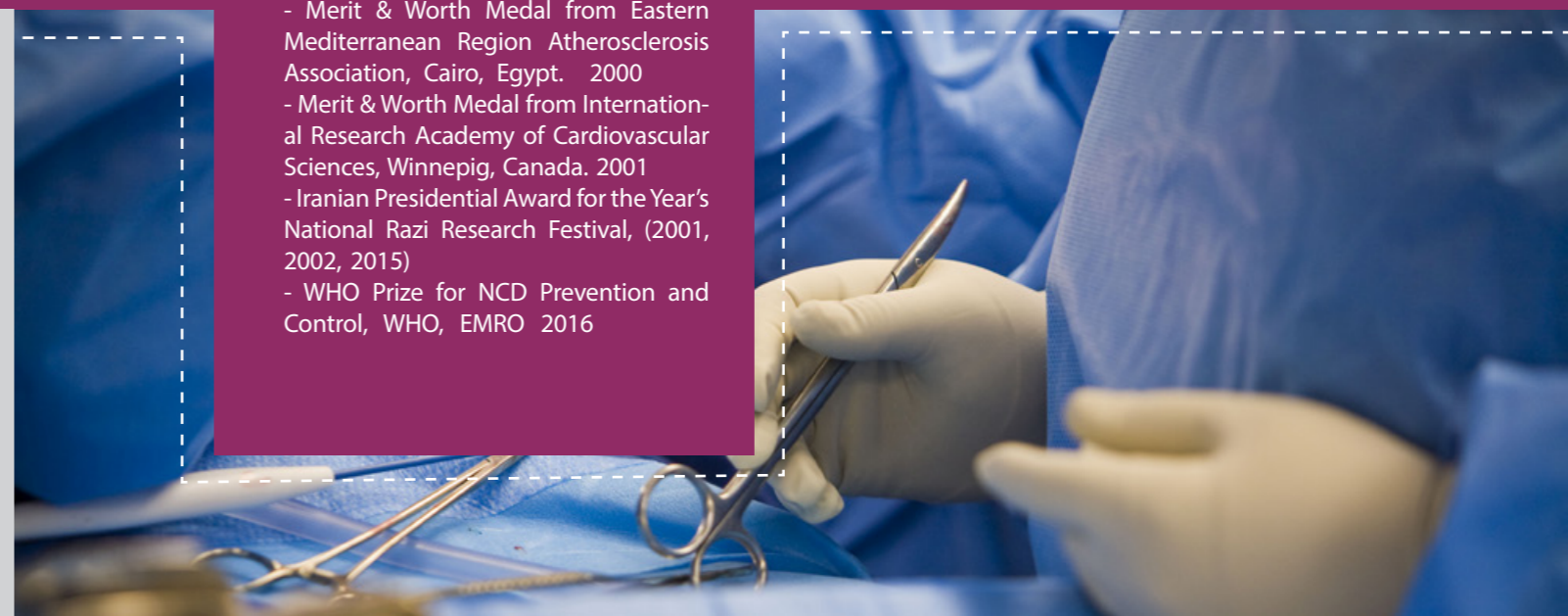
Artificial blood vein  
Smart diaper

### Number of Faculties and Staff:

- Faculty members: 5
- Number of staffs: 15

### Some of the national and international Awards:

- Merit & Worth Medal from Eastern Mediterranean Region Atherosclerosis Association, Cairo, Egypt. 2000
- Merit & Worth Medal from International Research Academy of Cardiovascular Sciences, Winnipeg, Canada. 2001
- Iranian Presidential Award for the Year's National Razi Research Festival, (2001, 2002, 2015)
- WHO Prize for NCD Prevention and Control, WHO, EMRO 2016



# ( P P N C D ) RESEARCH I N S T I T U T E

## Research Institute for Primordial Prevention of Non-Communicable Disease (PPNCD)

**H**Research Institute for Primordial Prevention of Non-Communicable Disease (PPNCD) was established in 2014 by joint collaboration of three research centers:

- Child Growth and Development Research Center
- Environment Research Center
- Pediatric Inherited Diseases Research Center

### Vision

PPNCD will work for developing effective approaches for primordial and primary prevention of non-communicable diseases (NCDs) by considering interactions of lifestyle, genetic, and environmental factors in the developmental origins of health and diseases (DOHaD).

### Research area

- Developmental origins of health and disease
- Growth disorders
- Establishing healthy lifestyle
- Pediatric metabolic syndrome
- Neurodevelopment
- Community participatory studies
- Birth cohort
- Environmental Medicine
- Bioinformatics predictions of genetic mutations
- Congenital Disorders
- Non-congenital genetic disorders

- Chronic and multifactorial diseases
- Abortion and infertility
- Genetic counseling
- Multidisciplinary research to solve environmental health challenges locally and globally
- Identifying, understanding, and preventing environmentally-related diseases
- Biomonitoring; measurement of the body burden of toxic chemical compounds, elements, or their metabolites, in biological substances such as urine or blood.
- Conducting practical and applied research in different fields of environment and environmental

### health including:

Water pollution and treatment processes; Municipal and industrial wastewater collection, Treatment and disposal; Air pollution monitoring and control; Municipal, Industrial, and Hazardous solid waste management; Environmental nanotechnology and biotechnology

### Research facilities:

- International and national research networks
- Organizing advanced training workshops for researchers
- E-learning and webinar programs for researchers
- Organizing CME programs in different fields of Medicine, Environmental sciences, and Public health



**((PPNCD))**  
R R E S E F A A R P C C | I N N S T T I T U T T E E



( P P N C D )  
**RESEARCH**  
I N S T I T U T E

**Important Studies:**

- Childhood and Adolescence Surveillance and Prevention of Adult Non communicable disease: CASPIAN Study
- Prospective Epidemiological Research Studies in IRAN- Birth cohort: PERSIAN Birth Cohort
- Iran- Ending Childhood Obesity: IRAN-ECHO
- National Interventions for Reducing Traffic Injuries in Iranian Youth

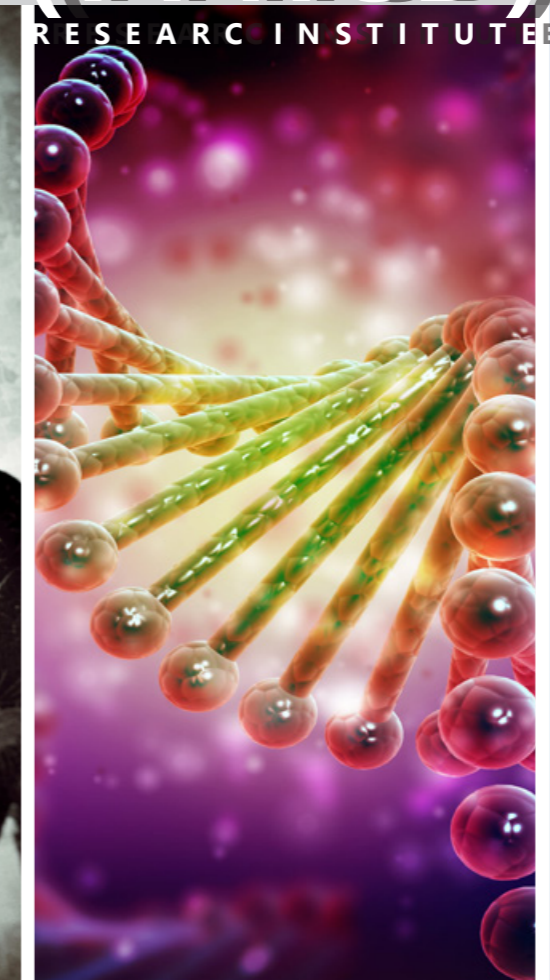
**Number of Researchers and Staff:**

- **Researchers:** 21
- **Staff:** 5

**PPNCD awards**

- Presidential Award in the National Razi Research Festival, as the first ranked scientist in biomedical sciences to Professor Kelishadi, 2018
- Nominated as the first 1% highly cited of the word scientists to Professor Kelishadi, (2015-2018)
- Presidential Award in the National Razi Research Festival for selection of the Child Growth and Development Research Center as the distinguished research center at national level, 2012

**(PPNCD)**  
RESEARCH INSTITUTE





**RESEARCH**  
CC EE NN TT EE RR SS



# A C Q U I R E D IMMUNO DEFICIENCY R E S E A R C H C E N T E R

**T**he acquired immunodeficiency research center was established in 2007 as a unit of the Infectious Diseases Research Center. The professional members of the center strive to overcome problems facing primary immunodeficiency patients and increase scientific research in the area of primary immunodeficiency diseases.

## Research areas:

- Primary immunodeficiency diseases
- Secondary immunodeficiency disorders
- Transplantation (kidney, bone marrow, liver)
- Autoimmunity
- Oncology and hematology
- AIDS and infectious diseases

## Research facilities:

Cellular laboratory facilities

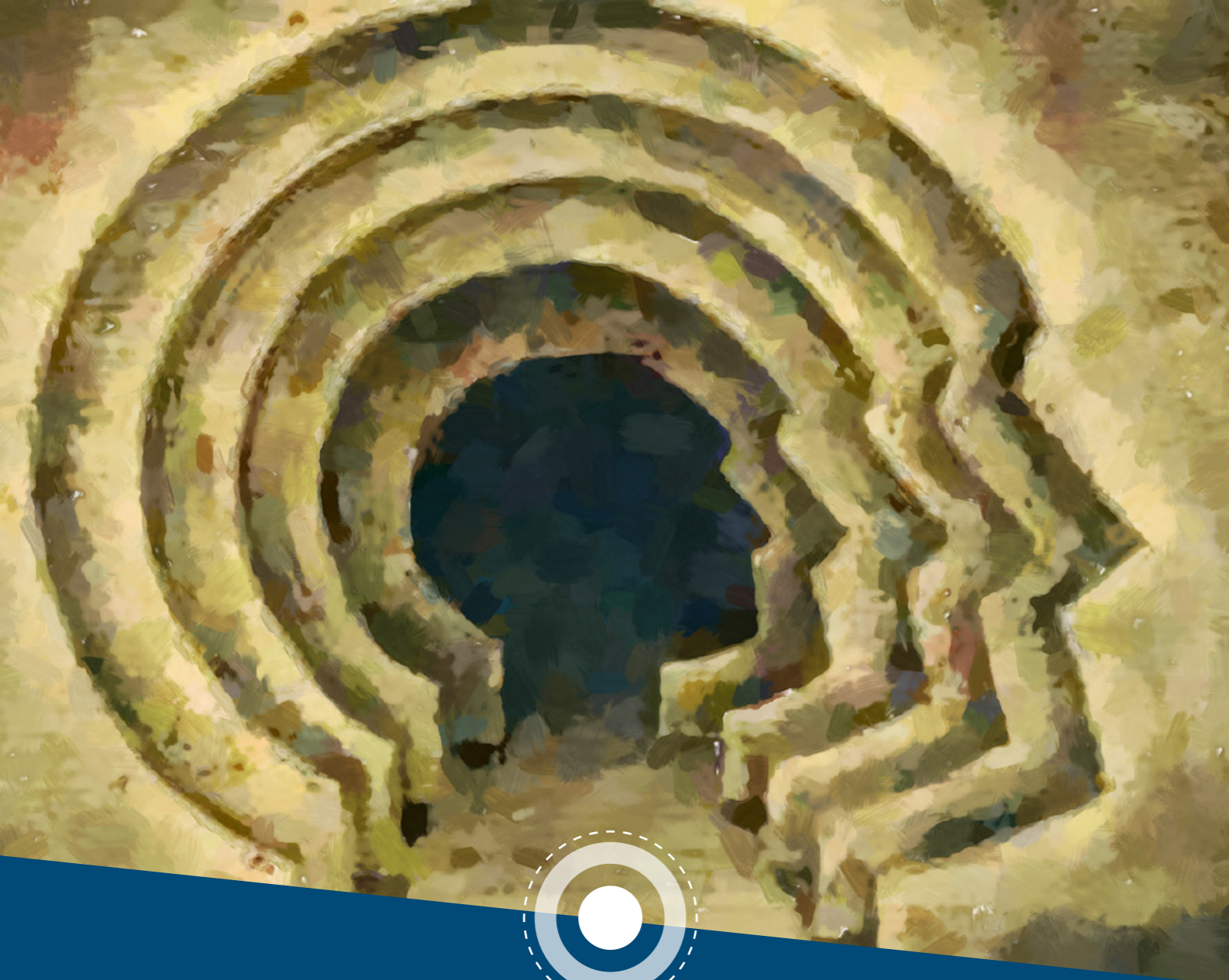
- Flow cytometry
- Invert microscopy
- Fluorescence microscopy
- Cell culture

## Molecular laboratory facilities:

- PCR
- Real time- PCR
- Gel electrophoresis
- Western blot
- ELISA facility



A A C C Q Q U U I I R R E E D D  
IMMUNO DEFICIENCY  
R R E E S S E E A A R R C C H H C C E E N N T T E E R R



**Behavioral sciences Research center (BSRC)**

**B**ehavioral sciences Research center (BSRC) contributes to groundbreaking and societally relevant research in the fields of psychology and psychiatry. BSRC, collaborating with Psychiatry Department of Isfahan University of Medical sciences, has been trying to expand the borders of research into practice since 1992.

**Research areas:**

1. Religion, culture and psychiatry
2. Epidemiology of psychiatric disorders
3. Emergency Psychiatry
4. Psychometric
5. Health psychology
6. Substance abuse, Alcoholism and smoking
7. Affective disorders
8. Child and Family psychiatry
9. Psychosomatic medicine
10. Sexual health

**Research facilities:**

- Game Therapy Lab.
- Biofeedback lab.
- psychiatric in-patient and out-patient services
- Journal of Behavioral Sciences Research (indexed in ISC)

# CRANIOFACIAL AND CLEFT RESEARCH CENTER

## Craniofacial and Cleft Research Center (CCRC)

Cleft lip and palate team of Isfahan University of Medical Sciences was established in 2005 for the care and treatment of patients with cleft and then continues as Craniofacial and Cleft research Center (CCRC) for management of congenital craniofacial anomalies. The center offers services to these patients from across the country and even from neighboring countries. In order to provide prevention, diagnosis, and treatment services to all patients, the only research center throughout the country in this field was established.

### Research areas:

1. Therapeutic activities as team management for patients affected by congenital craniofacial anomalies and cleft lip and palate
2. Preparation of treatment protocol from prenatal to adult patient
3. Comprehensive medical treatment
4. The use of diagnostic tools such as CT scan , MRI, fluoroscopy, nasoendoscopy and nasometry in the diagnosis and treatment of patients
5. Participation and cooperation with domestic and foreign specialists
6. Follow up patient treatment trends according to treatment protocols every 3-6 months
7. Analyses on genetic and clinical data for prevention and research
8. Publish booklet and brochure on topics needed by patients and families

### Facilities:

- Cleft lip and palate team
- Craniofacial team
- Hemifacial Microsomia team
- Congenital vascular anomalies team
- Genetic unit
- speech & language unit
- Craniofacial and Cleft patient registry



CRANIOFACIAL  
AND CLEFT RESEARCH CENTER



M A T E R I A L S  
**D E N T A L**  
R E S E A R C H C E N T E R ( D M R C )

**MATERIALS DENTAL RESEARCH CENTER (DMRC)**

**T**he DMRC is an interdisciplinary resource dedicated to furthering research and development in dental materials, biomaterials, biomechanics, and nanotechnology, which is located in the Isfahan School of Dentistry, and was established in 2012. Their Vision is to develop, advance and disseminate knowledge of Dental Material issues to contribute to the profession itself and the society.

**Research areas:**

Research projects based on different systems of dental implants, bone anchoring and...

Clinical research projects in the field of dental implants.

The basic and clinical research projects about the benefits of dental implants in the jaw bone reconstruction.

Basic and clinical research projects on aspects of beauty (Esthetic) in dental implants

Carrying out research projects on the effectiveness and functionality of dental implants in restoring function of the mouth, jaw and face

**Facilities:**

**Animal Research Lab**

**Clinical Research unit**

M M A A T T E E R R I I A A L L S  
**D E N T A L**  
R E S E A R C H C E N T E R ( D M R C )



I I S S F F A A H H A A N N

# EMERGENCY

MEDICINE RESEARCH CENTER



I S F A H A N

# EMERGENCY

MEDICINE RESEARCH CENTER

**E**mergency Medicine Research Center was established in 2017 to improve the hospital emergency care and quality of diagnosis and treatment while increasing the productivity of medical graduate and post graduate trainees.

**Research areas:**

- ED-management
- Trauma
- EMS (emergency medical science)/HEMS(Helicopter EMS)
- Bedside US (POCUS)
- Pain-management
- Disaster & Crisis management

- 1- Nuclear/ Chemical events
- 2- Biological events & Bioterrorist
- 3- Environmental events
- 4- Toxicology

**Facilities:**

- Clinical Skill Laboratory
- Disaster & emergency medical services center

# F O O D SECURITY RESEARCH CENTER

**T**he FSRC was established in 2010 and tries to introduce and apply the science of nutrition at both clinical and community levels with its highest quality.

**Research areas:**

- Clinical Nutrition
- Community Nutrition
- Food Sciences and Technology
- Food Security/Safety

**Facilities:**

- Research laboratory
- Body Composition Analyzer
- PCR
- Auto analyzer

**Awards:**

- 1st place in National Razi Research Festival: 2014 and 2015
- This center has been recognized as the “outstanding research center” by the Ministry of Health between top 5% centers at country level.



# F O O D SECURITY RESEARCH CENTER





# INFECTIOUS DISEASES

R E S E A R C H C E N T E R

## Infectious Diseases and Tropical Medicine Research Center (IDRC)

This center was established in 1998 in order to improve research and provide solutions in treatment of infectious and tropical diseases by collaborating with national and international scientific and health centers. It helps improve human knowledge in infectious diseases and tropical medicine, train researchers and provide professional services for tropical and infectious diseases.

### Research areas:

- Surveillance of respiratory diseases
- Surveillance of sexuality transmitted diseases
- Surveillance of blood borne transmitted diseases

### Facilities:

- Microbiology Laboratory
- Molecular biology Laboratory
- Serology Laboratory
- Clinic



# INFECTIOUS DISEASES

R E S E A R C H C E N T E R

### Awards:

- 1st place in National Razi Research Festival: 2014 and 2015
- This center has been recognized as the "outstanding research center" by the Ministry of Health between top 5% centers at country level.

# ISFAHAN CLINICAL TOXICOLOGY RESEARCH CENTER

## Vision:

Isfahan Clinical Toxicology Research Center (ICTRC) is a research center in the field of toxicology and toxinology in MUI. Medication safety, epidemiology of poisoning (toxico-epidemiology) in the central part of Iran, and treatment outcomes are among the most important research orientations of this center. This Center was established at 2002.

## Research areas:

Raising the public awareness in the field of toxicology science  
Performing the epidemiological and clinical researches with the goal of prevention and treatment of acute poisoning and chronic toxicity



I IS SF FAAHHA ANN CCL LI INNI IC CAAL L  
**TOXICOLOGY**  
RRE ES SE EAARRC CHH CCE ENNT TE ERR



# I S F A H A N ENDOCRINE METABOLISM R E S E A R C H C E N T E R

## Isfahan Endocrine and Metabolism Research Center

Isfahan Endocrine and Metabolism Research Center (I.E.M.R.C.) is a known research center in the field of endocrinology and metabolism disorders in Iran, and is affiliated to School of Medicine, Isfahan University of Medical Sciences & Health Services. In I.E.M.R.C., education and clinical care services come together to improve the quality of life for society as a whole, and for patients with diabetes or with other endocrinology and metabolism disorders in particular.

Isfahan Endocrine and Metabolism Research Center, formerly named "Diabetes Training and Treatment Research Center", was established in 1992. In 1997, the Center was officially approved by the Council for Development of Research Centers of the Ministry of Health and Medical Education (M.O.H.M.E.) under the title "Isfahan Endocrine and Metabolism Research Center", and the charter of the Center was endorsed by the Minister.

### Research areas:

- 1- Performing basic, epidemiological and clinical researches including clinical trials with the goal of prevention and treatment of metabolic and endocrine disorders.
- 2- Expansion and use of human knowledge in the field of primary, secondary and tertiary prevention of endocrine and metabolism disorders.

3- Improvement of the basis of the national health and treatment services, to meet the needs of the society, through carrying out basic, epidemiological and clinical research, especially clinical trials and cohort studies.

4- Collection and organization of the related data, documents, articles and certificates in the field of endocrinology to improve and facilitate the community health-related research projects.

5- Manpower training for research in the field of endocrinology.

6- Collaboration with other organizations and research centers at national, regional and international levels for prevention and treatment of prevalent endocrine disorders, especially diabetes and pre-diabetes, through performing applied medical research.

### Facilities:

- Research laboratory, diabetes, congenital hypothyroidism, thyroid cancer and endocrinology subspecialty clinics, clinical data registry, portable ultrasound machine, portable peripheral Doppler machine, body composition analyzer





# I S F A H A N EYE RESEARCH C E N T E R

## Research area:

### Ophthalmology disease include:

- anterior and posterior chamber
- Glaucoma
- Strabismus
- Plastic
- Neuro ophthalmology

### Facilities:

- wards of angiography,
- Radiology & ultrasound of the eye
- OCT
- perimetry
- web scan
- laser therapy
- Lasik
- topography
- emergency ward of ophthalmology
- clinics of ophthalmology (anterior and posterior chamber, glaucoma, strabismus, Consultation)
- laboratory and wards of ophthalmology and operation rooms.

## Isfahan Eye Research Center

Isfahan Eye Research Center (ERC), is a known research center in the field of ophthalmology and neuro-ophthalmology disorders in Isfahan, Iran. In Eye Research Center, we come together to improve the quality of life for patients with eye disease and cares of eyes. The ERC was established in 2006 as a center in ophthalmology disease area.

R R E E S S E E A A R R C C H H      C C E E N N T T E E R R  
**KIDNEY DISEASES**  
A A N N D D    R R E E N N A A L L    T T R R A A N N S S P P L L A A N N T T



R E S E A R C H    C E N T E R  
**KIDNEY  
DISEASES**  
A N D R E N A L T R A N S P L A N T

**Isfahan Kidney Diseases and renal transplant Research Center**

Isfahan Kidney Diseases Research Center is a known research center in the field of kidney disorders and renal transplant in Iran and is affiliated to School of Medicine, Isfahan University of Medical Sciences & Health Services. At this center, research, education, and clinical care services come together to improve the quality of life for the society as a whole, and for post-renal transplant patients or those with other renal disorders in particular. This center was established in 1998.

**Research area**

- 1- Renal Transplantation
- 2- Epidemiological and clinical research with the goal of prevention of chronic kidney disease
- 3- Prevention and treatment of acute kidney injury
- 4- Treatment of dialysis patient in the best way

**Facilities:**

Transplant center, hemodialysis and peritoneal dialysis centers, outpatient clinic, ultrasonography, microscope with an attached camera capable to transmit images to T.V. monitor, polarized microscope, ultrasound-guided renal biopsy, pathology and lab center, kidney donation center providing some financial resources.

# I S F A H A N NEUROSCIENCES R E S E A R C H C E N T E R

**A**mong our goals is to establish new advanced research techniques expanding partnerships with domestic and foreign research centers and to lead the production of neuroscience knowledge in the region. This center welcomes research proposals from all scientists in certain fields including neurology, neurosciences, neurogenetics and neuroimmunology. The main goal is to train a human resource researcher in the field of neuroscience. This center was established in 1996.

#### Research areas:

- Neuroscience and neurocognitive
- Stroke
- Multiple Sclerosis and NMO
- Neuromusculaire
- Epilepsy
- Alzheimer and Parkinson

#### Facilities:

- Stroke unit
- Multiple Sclerosis and Parkinson Clinic
- Cerebrovascular Registry



# I S F A H A N NEUROSCIENCES R E S E A R C H C E N T E R

A Multicenter, prospective, non interventional study to assess Adherence to treatment for patients with Relapsing Multiple Sclerosis (RMS) who are prescribed subcutaneous (sc) interferon beta1a

# M E D I C A L EDUCATION R E S E A R C H C E N T E R

**T**he Medical Education research Center at the Isfahan University of Medical Sciences and Health Services (MUI) was established in 1988 in response to the growing demand of faculty development and an up to date curricula, innovative teaching and evaluation methods. At present this center is considered as one of the pioneer centers in Iran. It is also known as one of the Educational Poles in the country. The Medical Education research Center, will act as a prominent center in the country and region, in respecting scientific principles of medical education and the values of Islamic Republic of Iran.

## Research areas:

The MERC assists in strengthening curriculum-planning, improving the quality of teaching, evaluating students learning and effectiveness of teaching and, evaluating the variety of educational programs. It is also active in the field of university faculty development, and conduction of a vast array of researches in education.

## Facilities:

Two big Halls  
Learning cottage which is suitable for workshops  
Clinical skills learning center  
Virtual education center.





M E D I C A L I M A G E A N D  
**S I G N A L**  
**P R O C E S S I N G**  
R E S E A R C H C E N T E R

M E D I C A L I M A G E A N D  
**S I G N A L P R O C E S S I N G**  
R E S E A R C H C E N T E R

**Medical Image and Signal Processing Research Center**

**M**edical Image and Signal Processing Research Center (MISP) was established in 2005 in close collaboration with faculty members from Isfahan University of Medical Sciences, Isfahan university of Technology, and University of Isfahan. At MISP, we work on different aspects of biomedical engineering, biomedical image and signal processing. We are dedicated to find new technical solutions for medical devices and fill the gap between the medical and engineering communities.

**Research areas:**

- Ocular Image Analysis
- Microscopic Image Analysis
- Cardiovascular Image and Signal Analysis
- Bioinformatics
- Acoustic Data Analysis
- Brain Image and Signal Analysis
- Scopy Image and Video Analysis
- Game and treatment
- Medical Electronics

**Facilities:**

- Scopy Data Capturing Devices
- Video and Image acquiring systems
- Signal and Speech recording facilities
- High performance Image, video and signal processing systems

**International projects:**

IBM Research Australia project which is focused on medical image processing, mainly on automatic analysis of optical coherence tomography images.



N O S O C O M I A L  
**INFECTION**  
R E S E A R C H C E N T E R



N N O O S S O O C C O O M M I I A A L L  
**INFECTION**  
R R E E S E A A R R C C H H C C E N T T E E R R

### Nosocomial Infection Research Center

**T**he Nosocomial Infection Research Center (NIRC) at Isfahan University of Medical Sciences will be a leading academic organization dedicated to advancing, applying and facilitating high standards of infection prevention and control research practice for health-care centers.

#### Research areas:

- Nosocomial infections prevention, control and treatment
- Nosocomial infections and Antibiotic resistant micro-organisms
- Nosocomial infections and Risk factors
- Nosocomial infections in Immunocompromised patients

#### Facilities:

- Microbiology and molecular Laboratory
- Bacteria Collection



# PSYCHOSOMATIC

R E S E A R C H C E N T E R

**T**his center will be transformed into a leading hub for psychosomatic research in Asia. The foundation for this goal is achieved by the integration of high quality pre-clinical and clinical research in a University-Hospital-Industry partnership. This research center was established in 2010.

Research areas:

- Psychosomatic disorders
- Consultation-Liaison Psychiatry
- Health Psychology

#### Facilities:

- Psychosomatic laboratory
- Instrumental and interventional laboratory

#### International projects:

- Marburg: A cross-cultural study: Preparing, developing and determining the psychosomatic properties of package of psychosomatic symptoms scales and the prevalence of psychosomatic disorders ... in Iran & Germany.
- Hamburg: Dialogues on disability and inclusion between Isfahan and Hamburg.

#### Freiburg:

- 1) Mental health and Globalization
- 2) Basic Psychosomatic care model family physician training.



# PSYCHOSOMATIC

R R E E S S E E A A R R C C H H

C C E E N N T T E E R R

# SCHOOL OF DENTISTRY

RESEARCH CENTER (DMRC)



## There are 3 research centers in Isfahan School of Dentistry

1. Torabinejad Dental Research Center
2. Dental Materials Research Center
3. Implants Research Center

The aim of these centers is to perform original researches, which will improve the ability to understand, recognize and treat dental diseases.

### Research areas:

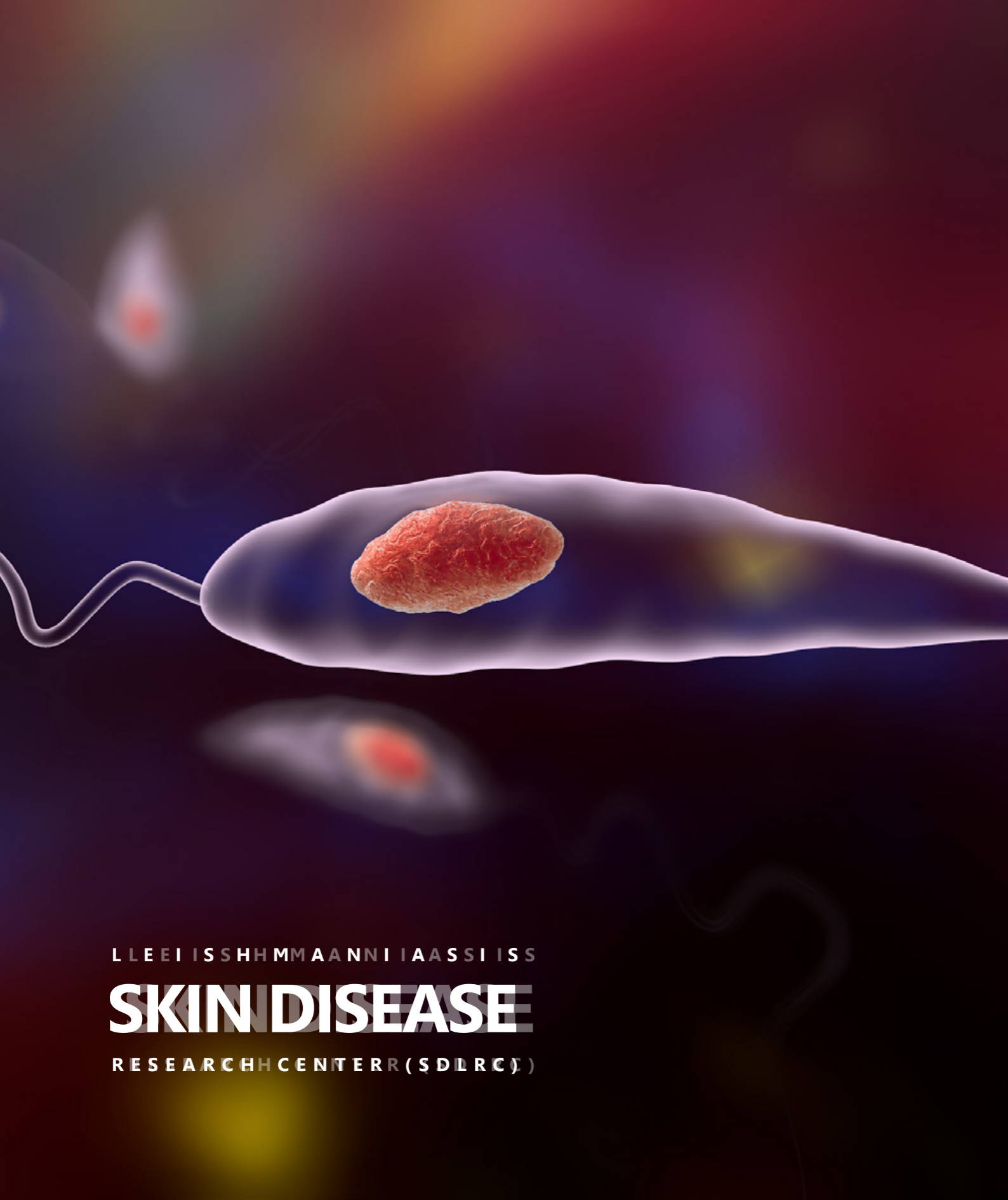
1. Research projects based on different systems of dental implants, bone anchoring and ...
  2. Clinical research projects in the field of dental implants.
  3. The basic and clinical research projects about the benefits of dental implants in the jaw bone reconstruction.
  4. basic and clinical research projects on aspects of beauty (Esthetic) in dental implants
- Carrying out research projects on the effectiveness and functionality of dental implants in restoring function of the mouth, jaw and face

### Facilities:

- Micro Tensile Testing Machine
- Chewing Simulator
- Electromechanical Universal Testing Machine
- Thermal cycling Machine
- Polisher Machine
- CNC Cutting Section Machine
- Centrifuge Machine
- Low Speed Saw
- Cutting Machine for Animal Samples
- Cutting Machine
- Pin on Disc Wear Machine
- Digital Incubator
- Incubator and shaker
- Autoclave
- UV Ray Equipped Hood
- Trinocular Zoom Stereo Microscope
- Rocatec TM Junior Blasting Module
- Light Microscope
- Laboratory Box Furnace
- Infra-Red Digital Thermometer
- Digital Caliper
- LED Radiometer
- QTH Radiometer
- Vortex Mixer
- Electronic Micrometer
- Equipped Fluoride Laboratory
- Equipped Animal Lab including animal den and operating room
- Equipped Clinical Research Department including 20 dental units
- Equipped Dental Implant Department

### Awards:

- Winner of the Outstanding Research Center in Razi Award Festival, for Dental Materials Research Center. Tehran, Iran, 2017.
- Selecting Dr. Mohammad Hossein Fathi amongst one percent of the world's top elites & scientists based on Thomson Reuters ISI scientific data base.
- Winner of 1st prize of Razi Award Festival, Dentistry Section. Tehran, Iran, 2003 by Prof. Abbasali Khademi.
- Winner of 3rd prize of Razi Award Festival, Dentistry Section. Tehran, Iran, 2007 by Prof. Omid Savabi.



L L E I I S S H H M M A A N N I I A A S S I I S S

# SKIN DISEASE

R E S E A R C H H C E N T E R R ( S D L R C )

L E I S H M A N I A S I S

# SKIN DISEASE

R E S E A R C H C E N T E R ( S D L R C )

**S**kin disease and Leishmaniasis research center (SDLRC) was established in 2000. This research center attempts to reduce the incidence of cutaneous leishmaniasis and skin diseases at the national level and to develop new effective approaches for diagnosis and treatment of skin disorders. This purpose is attained by developing basic, clinical, experimental and multidisciplinary research projects.

#### Research area:

- Cutaneous leishmaniasis
- Skin stem cell
- Pigmentary disorders
- Papulosquamous disorder
- Hair disease
- Nail disease
- Burn and ulcer management
- Dermatology information technology
- Psychosomatic disorder

#### Facilities:

- Leishmaniasis laboratory
- Cell culture laboratory
- Cleanroom
- Dermatology patient electronic database
- Dermatology day clinic
- Surgery room
- Dermatology laser center
- Reference laboratory
- Human bio repository

#### Awards:

Ranked First among Iranian research centers for four consecutive years (Razi Research Festival , 2003-2006)

**Water and Electrolytes Research Center, Faculty of Medicine (WERC)**

**T**he WERC always has a vision of “Bench to Bed” for research implementation in clinic. Therefore all the clinical questions related to kidney functions that need basic researches in animal models will be considered. This research center was established in 2015.

**Research area:**

To perform basic researches related to kidney functions in order to improve the quality of renal basic sciences. The WERC always has vision of “Bench to Bed” for research implementation in clinic. Therefore, all the clinical questions related to kidney functions that need basic researches in animal models will be considered.

**Facilities:**

Power Lab systems, Renal circulation measurements, equipment and supplies, ELISA Reader, Large animal room, Metabolic cage, Spectrophotometer, Osmometer, Auto-analyzer, surgical microscope

# JOURNALS

004.738.5

Günter Born

INTERNET łatwy start dla seniorów

Günter Born

INTERNET łatwy start dla seniorów

Alicja Zarowska-Mazur

Cyfrowy świat

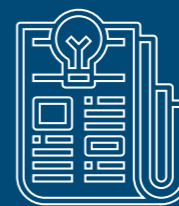
E-LEARNING dla EDUKACJI

Splątana sieć Przewodnik po bezprzewodnik

ISSN 1644-4001 UNIVERSITY

# JOURNALS

OFF MEDICAL SCIENCES





### Isfahan University of Medical Sciences Journals

|   | Journal Title                                       | ISSN                    | Language | Start Date | Scope  | Indexing and Abstractin   | Website        | Scopus Rank | Scopus H-Index | ISI-WoS H-Index |
|---|---|-------------------------|----------|------------|--|---|----------------|-------------|----------------|-----------------|
| 1 | Journal of Research in Medical Sciences (JRMS)      | /1735-1995<br>1735-7136 | English  | 2006       | Health, ethical and social issues in field of Clinical Medicine  | ,ISI-WoS, PubMed<br>,Scopus, CAS<br>Embase, ISC, DOAJ           | jrms.mui.ac.ir | Q2          | 26             | 21              |
| 2 | International Journal of Preventive Medicine (IJPM) | /2008-7802<br>2008-8213 | English  | 2010       | ,Primordial, primary secondary and tertiary levels of prevention | ,ISI-WoS, PubMed<br>,Scopus, Embase<br>ISC, DOAJ                | ijpm.mui.ac.ir | Q2          | 26             | 8               |
| 3 | Research in Pharmaceutical Sciences (RPS)           | /1735-5362<br>1735-9414 | English  | 2010       | All aspects of the pharmaceutical sciences                       | ,ISI-WoS, PubMed<br>,Scopus, Embase<br>,Index Copernicus<br>ISC | rps.mui.ac.ir  | Q1          | 19             | 7               |
| 4 | ARYAtherosclerosis                                  | /1735-3955<br>2251-6638 | English  | 2006       | Cardiology Research and Practice and all cardiovascular issues   | ,ISI-WoS, PubMed<br>,Scopus, Embase<br>,Index Copernicus<br>ISC | arya.mui.ac.ir | Q3          | 12             | 5               |
| 5 | Journal of Research in Pharmacy Practice (JRPP)     | /2319-9644<br>2279-042X | English  | 2012       | Evidence-based drug-related medical researches                   | SI-WoS, PubMed,<br>Index Cope                                   | www.jrpp.net   | -           | -              | 5               |
| 6 | Dental Research (Journal (DRJ))                     | /1735-3327<br>2008-0255 | English  | 2011       | Key issues of relevance to dentistry                             | ,PubMed, Scopus<br>CAS, Index<br>,Copernicus, ISC<br>DOAJ       | drj.mui.ac.ir  | Q3          | 8              |                 |

|    | Journal Title   | ISSN                    | Language | Start Date | Scope  | Indexing and Abstractin        | Website             | Scopus Rank | Scopus H-Index | ISI-WoS H-Index |
|----|---|-------------------------|----------|------------|--|--------------------------------|---------------------|-------------|----------------|-----------------|
| 7  | Iranian Journal of Nursing and Midwifery (Research (IJNMR))         | /1735-9066<br>2228-5504 | English  | 2008       | Area of Nursing & Midwifery  | PubMed, Index Copernicus, ISC  | ijnmr.mui.ac.ir     | -           | -              |                 |
| 8  | Journal of Medical Signals and Sensors (JMSS)                       | 2228-7477               | English  | 2012       | Bioelectric, Bioinformatics ,and medical informatics Biophysics and medical physics, Education in ,biomedical engineering Health technology assessment, Standard in biomedical engineering and other related areas | PubMed, ISC                    | jmss.mui.ac.ir      | -           | -              |                 |
| 9  | Journal of Education and Health Promotion (JEHP)                    | /2277-9531<br>2319-6440 | English  | 2012       | ,Medical Education ,Education Evaluation Medical Science Education   | PubMed, Index Copernicus       | www.jehp.net        | -           | -              |                 |
| 10 | Advanced Biomedical (Research (ABR))                                | 2277-9175               | English  | 2012       | ,Medicine and biology including basic science research and clinical investigations   | PubMed, Index Copernicus, DOAJ | www.ad-.vbiores net | -           | -              |                 |
| 11 | International Journal of Environmental Health Engineering ((IJEHE)) | 2277-9183               | English  | 2012       | ,Environmental health occupational health, and epidemiological studies   | CAS, Index Copernicus, DOAJ    | www.ijehe.org       | -           | -              |                 |
| 12 | Journal of Isfahan Medical School                                   | /1027-7595<br>1735-854X | persian  | 2005       | Medical Sciences - General   | Scopus, CABI, CAS, Emba        | jims.mui.ac.ir      | Q3          | 8              |                 |

ISFAHAN UNIVERSITY  
**LIBRARIES**  
 MEDICAL SCIENCES

**Grand Libraries of Isfahan University of Medical Sciences**

| Row | Name of library  | Date of establishment | Area (Square Meters) | Area of the Study | Number of chairs | Number of volumes | Remarks |
|-----|--|-----------------------|----------------------|-------------------|------------------|-------------------|---------|
| 1   | Moayed Al-OTaba (medical and pharmaceutical)                 | 2017                  | 2400                 | 1500              | 400              | 68847             |         |
| 2   | Library of the Faculty of Health                             | 1996                  | 600                  | 86                | 56               | 23172             |         |
| 3   | Library of the Faculty of Nursing                            | 1968                  | 585                  | 200               | 135              | 25618             |         |
| 4   | Library of the Faculty of Management and Medical Information | 2009                  | 550                  | 120               | 56               | 20403             |         |
| 5   | Library of the Faculty of Rehabilitation                     | 2009                  | 170                  | 200               | 70               | 10385             |         |
| 6   | Library of the Faculty of Dentistry                          | 1974                  | 293                  | 115               | 85               | 19189             |         |
| 7   | Library of the Faculty of Modern Technologies                | 2012                  | 120                  | 50                | 8                | 1582              |         |
| 8   | Library of Faculty of nutrition and Food Sciences            | 2014                  | -                    | -                 | -                | 1286              |         |
| 9   | Library of European Documentation Centre                     | 1997                  | 70                   | -                 | -                | 6720              |         |



ISFAHAN UNIVERSITY  
**LIBRARIES**  
 MEDICAL SCIENCES





# M E E T I N G A N D CONFERENCE HALLS UNIVERSITY OF MEDICAL SCIENCES

## Meeting and Conference Halls of Isfahan University of Medical sciences

| Row | Name of Hall     | Capacity    | Area (Sq m) | Facilities  | Type of occupancy   |
|-----|------------------|-------------|-------------|---|---|
| 1   | Ibn Sina         | 400         | 580         | Equipped with computer system - video projection - CCTV     | Scientific (international, national, provincial) congresses, symposiums, scientific and cultural conferences and workshops          |
| 2   | Loghman          | 420         | 580         | Equipped with computer system - video projection            | Scientific (international, national, provincial) congresses, symposiums, scientific and cultural conferences and workshops          |
| 3   | Razi             | 350         | 580         | Equipped with computer system - video projection            | Scientific (international, national, provincial) congresses, symposiums, scientific and cultural conferences and workshops          |
| 4   | Exhibit booths   | 17 (booths) | 600         | Internet, and Electricity , Exhibit booths                  | Exhibition of products, supplies and equipment of various scientific and cultural fields  |
| 5   | Zeytoon          | 120         | 250         | Equipped with computer system - video projection - CCTV     | Scientific (international, national, provincial) congresses, symposiums, scientific and cultural conferences and training workshops |
| 6   | Hekmat           | 60          | 152         | Equipped with computer system - video projection - CCTV     | Meetings  |
| 6   | Shahid Tabatabai | 120         | 120         | Equipped with computer system - video projection - headsets | and Training Classes Meetings   |



| Row | Name of Hall       | Capacity | Area (Sq m) | Facilities   | Type of occupancy                  |
|-----|--------------------|----------|-------------|--|------------------------------------|
| 7   | Dr. Morteza Hakami | 350      | 400         | Equipped with computer system - video command - headsets - projection room - projection curtains | Different Occasions - Examinations |
| 8   | Dr. Borjian        | 90       | 100         | Equipped with computer system - video projection - projection curtains                           | and Training Classes Meetings      |

# M E E T I N G A N D CONFERENCE HALLS UNIVERSITY OF MEDICAL SCIENCES



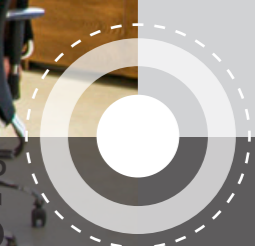
## M E E T I N G A N D CONFERENCE HALLS UNIVERSITY OF MEDICAL SCIENCES



| Row | Name of Hall  | Capacity | Area (Sq m) | Facilities   | Type of occupancy             |
|-----|---------------|----------|-------------|--|-------------------------------|
| 9   | Dr. riahi     | 120      | 140         | Equipped with computer system - video projection - projection curtains       | and Training Classes Meetings |
| 10  | Movahhedian   | 260      | 300         | Equipped with 4 LED screens - slide show screen and Command Room             | and Training Classes Meetings |
| 11  | Dr. Nafisi    | 260      | 300         | Equipped with 4 LED screens - slide show screen and Command Room             | and Training Classes Meetings |
| 12  | Dr. Adib      | 60       | 100         | Equipped with computer system for each person - slide show screen            | and Training Classes Meetings |
| 13  | Hasht Goosh   | 60       | 180         | Equipped with computer system for each person – headsets - slide show screen | and Training Classes Meetings |
| 14  | Farhikhtegan  | 50       | 100         | Equipped with computer system– headsets - slide show screen                  | and Training Classes Meetings |
| 15  | Hall Firoozeh | 600      | 800         | Equipped with sound system   | Conferences and Occasions     |



MEETING AND  
**CONFERENCE HALLS**  
 UNIVERSITY OF MEDICAL SCIENCES



| Row | Name of Hall                                  | Capacity | Area (Sq m) | Facilities   | Type of occupancy                           |
|-----|---|----------|-------------|--|---|
| 16  | Sabz Hall                                     | 400      | 600         | Equipped with sound system   | Conferences and Occasions                   |
| 17  | Tar Pooyesh                                   | 52       | 80          | Equipped with sound system – a monitor for each person                                     | and Training Classes Meetings               |
| 18  | Sabz Conference Hall                          | 70       | 140         | Equipped with sound system – video projection - slide show screen - CCTV                   | and Training Classes Meetings               |
| 19  | Chamran Hall (Faculty of Modern Technologies) | 50       | 80          | Equipped with sound system – video projection - slide show screen - CCTV - desk microphone | and Training Classes Meetings and Occasions |

| Row | Name of Hall                             | Capacity | Area (Sq m) | Facilities   | Type of occupancy                            |
|-----|--|----------|-------------|--|--|
| 20  | Andisheh Hall (Faculty of Nursing)       | 62       | 104         | Equipped with computer system – video projection - desk microphone | and Training Classes Meetings and Occasions  |
| 21  | Ma'refat Hall (Faculty of Nursing)       | 35       | 60          | Equipped video projection  | and Training Classes Meetings                |
| 22  | Shahid Heydari Hall (Faculty of Nursing) | 150      | 550         | Equipped video projection  | and Training Classes Meetings and Occasions  |
| 23  | IT unit (Faculty of Nursing)             | 350      | 96          | Equipped 350 PCs and 3 separate cyber rooms                        | and Training Classes - Meetings Examinations |



M E E T I N G S A N D  
**CONFERENCE HALLS**  
 U N I V E R S I T Y O F M E D I C A L S C I E N C E S



M E E T I N G S A N D  
**CONFERENCE HALLS**  
 U N I V E R S I T Y O F M E D I C A L S C I E N C E S

| Row | Name of Hall                              | Capacity | Area (Sq m) | Facilities   | Type of occupancy                             |
|-----|---|----------|-------------|--|---|
| 24  | Amphitheatre (Faculty of Dentistry)       | 300      | 350         | Equipped with video projection - slide show screen - CCTV                            | and Training Classes Meetings and Occasions   |
| 25  | Conference Hall (Faculty of Dentistry)    | 80       | 150         | Equipped with computer system for each person - video projection - slide show screen | and Training Classes Meetings                 |
| 26  | Abu Reyhan Hall (Faculty of Pharmacy)     | 180      | 250         | Equipped with video projection - slide show screen                                   | and Training Classes Meetings and Occasions   |
| 27  | Valian Hall (Faculty of Pharmacy)         | 100      | 200         | Equipped with video projection - slide show screen                                   | and Training Classes Meetings and Occasions   |
| 28  | Pazhoohesh Hall (Faculty of Management)   | 30       | 70          | Equipped with a computer system and LED Screen                                       | and Training Classes Meetings                 |
| 29  | Ta'ali Hall (Faculty of Management)       | 55       | 160         | Equipped with a desk microphone and 3 LED Screens                                    | and Training Classes Meetings                 |
| 30  | Isfahan Hall (Faculty of Management)      | 152      | 400         | Equipped with 4 workshops - slide show screen  | and Training Classes Meetings                 |
| 31  | Ma'refat Hall (Faculty of Rehabilitation) | 48       | 60          | Equipped with video projection   | and Training Classes Meetings                 |
| 32  | Bahman Hall (Faculty of Rehabilitation)   | 15       | 30          | Equipped with video projection   | and Training Classes Meetings and counselling |
| 33  | Mi'ad Hall                                | 100      | 120         | Equipped with video projection   | and Training Classes Meetings and counselling |



# C A N T E E N S

## DINING HALLS

UNIVERSIT OF MEDICAL SCIENCES

### Dining Halls and Canteens of Isfahan University of Medical Sciences

| Row | Name of Dining Halls and Canteens | Capacity | Area (Sq M) | Adress                             |
|-----|-----------------------------------|----------|-------------|------------------------------------|
| 1   | Central Self-service Canteen      | 1500     | 4200        | University Campus, near Refah Bank |
| 2   | Persian Gulf Dining Hall          | 600      | 1200        | Near the Faculty of Rehabilitation |

### Proprietary Dormitories of Isfahan University of Medical Sciences

| Name of Dormitory       | Kermani 1         | Kermani 2   | Milad       | Shahid Kharrazi   | Shahid Radda-nipour | Jey   | Kowsar  | Shahid Mirbagheri |
|-------------------------|-------------------|-------------|-------------|-------------------|---------------------|---|---|-------------------|
| Type of Dorm            | Female Dorm       | Female Dorm | Female Dorm | Male Dorm         | Male Dorm           | Male Dorm   | Male Dorm   | Female Dorm       |
| Location                | In Campus         | In Campus   | In Campus   | In Campus         | In Campus           | Out of Campus   | Out of Campus                                     | In Campus         |
| Standard Capacity       | 260               | 375         | 348         | 265               | 80                  | 430   | 140   | 195               |
| Current Dorm Population | 325               | 405         | 374         | 292               | 80                  | 470   | 140   | 200               |
| Total area ((Sq m       | 9184              | 10573       | 11612       | 4750              | 2800                | 19680   | 5600  | 5106              |
| Address                 | University Campus |             |             | University Campus |                     | After Jey Terminal crossroads, Jey St., Ahmad-Abad Sq | Shahid Zarei ALY., Keshavarzi St., Keshavarz Blvd | University Campus |





### 9-of-Dey Indoor swimming pool

(6000 square meters) (Giving service to more 2,000 people a day)  
 (Including a 50 × 25 m pool - Dry sauna - Steam sauna – a Jacuzzi - Showers and locker rooms - furnace room, etc.)

### A sports complex under way for girls

(2100 square meters)  
 Includes Handball, Volleyball, Basketball, and Badminton courts



## ISFAHAN UNIVERSITY SPORTS FACILITIES OF MEDICAL SCIENCES

### Sports facilities of Isfahan University of Medical Sciences

#### Indoor sports facilities of the University

(5700 square meters) (Giving service to more than 1000 people a day)  
 (Including Shahid Movahedi sports complex with basketball and badminton courts - table tennis hall - shooting hall - martial arts gym – Bodybuilding gym - aerobics gym)

#### Indoor sports facilities of the Dormitories

(1,300 square meters) (Giving service to more than 500 people a day)  
 (Includes Efaf Bodybuilding Gym in the Kermani Dorm (Girls) - Hijab Mirbagheri Bodybuilding Gym (Girls) - Asgari Gym and Tabatabaei Martial arts gym (Boys) – Javan Bodybuilding Gym and Kharrazi Table Tennis Hall (Boys) - Kowsar Bodybuilding Gym (Boys)

#### Open-air sports facilities of the University

(2100 square meters) (Giving service to more than 1,500 people a day)  
 (Including Dashnavaran Great Grass football pitch – Farzanegan Grass football pitch - Farzanegan Hard Football Fields and Volleyball and Basketball courts – Talash Clay Tennis court – Kowsar Carpet football field –Fadak Carpet football field

#### Open-air sports facilities of the Dormitories

(3000 square meters) (Giving service to more than 500 people a day)  
 Includes Volleyball and Basketball courts and a Small Soccer Field in Jey dormitory (for boys)  
 Hard Volleyball and Basketball courts and a Small Soccer Field in Kharazi dormitory (for boys)  
 Cycling Lane in Kermani dormitory (for girls)  
 Volleyball and basketball courts in Kermani dormitory (for girls)

| Dormitory Facilities |  |    |   |
|----------------------|--|----|---|
| 1                    | Study Rooms  | 13 | Indoors and outdoors vacuum cleaner     |
| 2                    | Television lounge and Chapel                           | 14 | Gas and electric samovar                |
| 3                    | Internet café  | 15 | Steam Ironing Rooms                     |
| 4                    | Indoor and open-air Gyms                               | 16 | Thermocouple all-steel Gas Stoves       |
| 5                    | Bike lanes   | 17 | Water cooler                            |
| 6                    | Counseling Offices                                     | 18 | LCD and ordinary 46-60 inch Televisions |
| 7                    | Study Parks in Female Dormitories                      | 19 | Facsimile Device                        |
| 8                    | Supermarket, Xerox Shop, and Barber's Shop             | 20 | Clothes Rack                            |
| 9                    | Bazaar including: Tailor's Shop and Traditional lounge | 21 | Fire Hose and Extinguisher              |
| 10                   | Emergency power system                                 | 22 | Hands Free Electric Shoe Polisher       |
| 11                   | Fire Escape  | 23 | A Desk in each Room                     |
| 12                   | Wireless system  |    |   |



I S F A H A N N U N I V E R S I T Y  
**SPORTS FACILITIES**  
 O F M E D I C A L S C I E N C E S



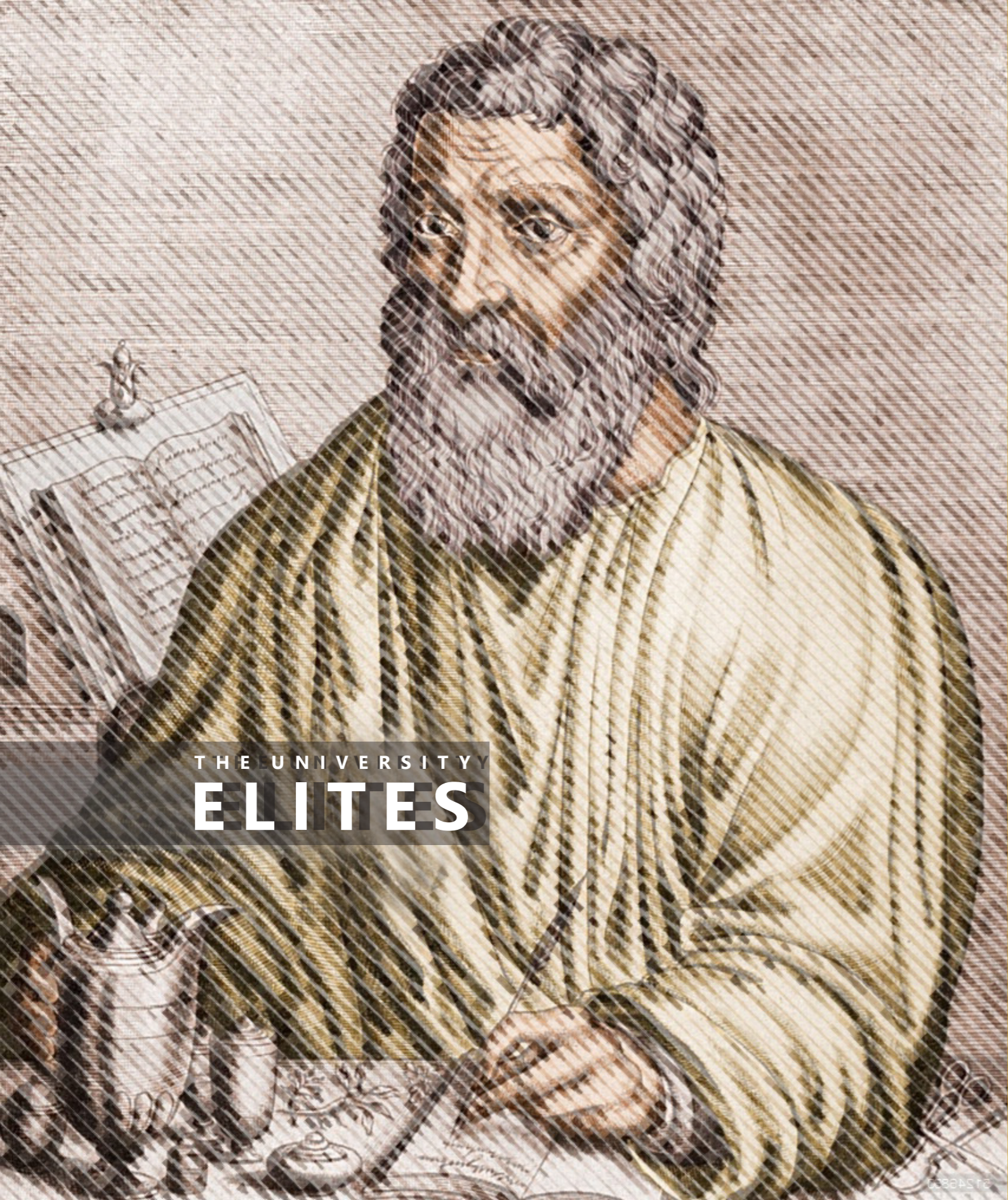


H O L D I N G  
**CELEBRATIONS**  
AND STUDENT CEREMONIES



H O L D I N G  
**CELEBRATIONS**  
AND STUDENT CEREMONIES





THE UNIVERSITY  
**ELITES**



■ The Elite of Faculty of Medicine, Isfahan University of Medical Sciences



**Dr. Morteza  
Hakami**

THE UNIVERSITY  
**ELITES**

### **Dr. Morteza Hakami**

**Date of Birth:** 1905

**Death:** 1980

**Department:** Surgery

**Education:**

Certificate in Physics, Chemistry and Natural Sciences from the French saint pallières University, 1929

Certificate of Internship from San Al-Sari Hospital and Rehabilitation Centre for the Disabled, 1931

**Diploma in Tuberculosis, Paris:** 1935

Bachelor of Law Degree, Faculty of Law, Grenoble, 1936

Ph.D. in Medicine from University of Montpellier, 1936

Certificate of Abdominal Surgery, North America, 1953

Certificate of supplementary courses in Surgery from London University, 1957

**Works:**

Death and Autopsy

Diagnosis of Abdominal, Genital, Serous Lumbar, Upper and Lower Extremity diseases – Minor Surgery in two volumes

A Guide to Autopsy

Cadaveric blood transfusion

Postoperative Diseases and complications

**Inventions, Discoveries and Awards:**

Received the Medical Assembly and Graduated with Distinction from the French University in 1935

Founder of National Society for Control of Cancer in Isfahan

Received an Order from France Government

Establishment of the Journal of the School of Medicine in 1963

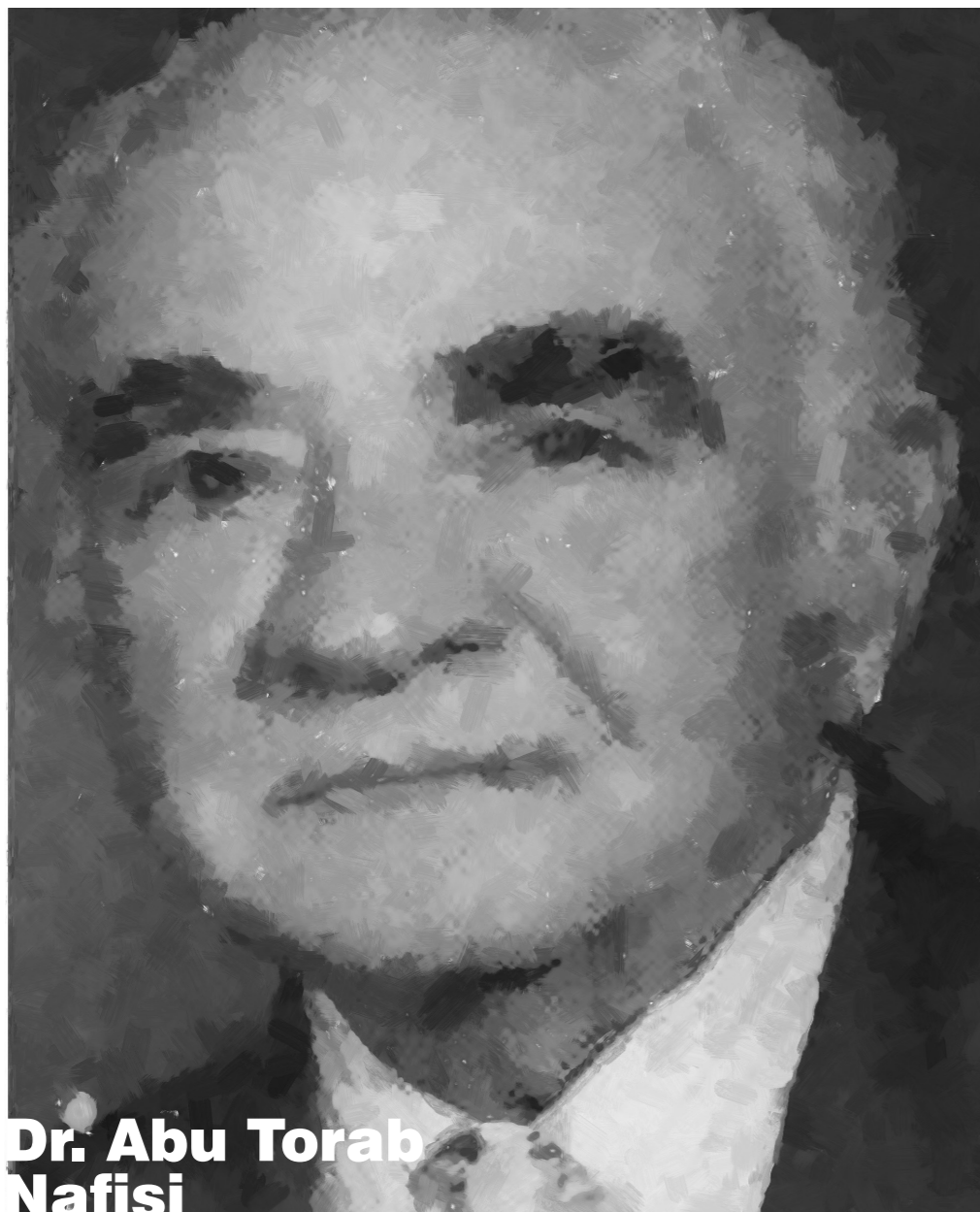
Founder of National Cancer Society in Isfahan and a 100-bed hospital (current Seyed-al-Shohada Hospital) in 1969

Received an award from Observer Medical Association of Grenoble Hospitals.

**Message:**

If a person does his job with the aim of serving people, he will never be tired of his work and his life will be pure pleasure.

■ The Elite of Faculty of Medicine, Isfahan University of Medical Sciences



**Dr. Abu Torab  
Nafisi**

## THE UNIVERSITY ELITES

### **Dr. Abu Torab Nafisi**

**Date of Birth:** 1914

**Death:** 2007

**Department:** Internal Medicine, Cardiology

**Education:**

Graduated from Tehran Medical School with Distinction in 1937

Received Cardiovascular specialty at Harvard University in 1959

**Books:**

He authored 23 books and 849 papers. Several research papers and some treatises are written by him

**Including the Religious Foundations of Traditional Medicine in Iran:**

Chest Symptomatology (respiration and hemorrhage) 2 vols

Symptomatology of Digestive System vol. 1

How to learn the Principles of Cardiography?

Preliminaries Introduction to techniques and learning of Medical Science

Properties of food and food during the centuries and between different nations of the world

Introduction to techniques and learning of Medical Science

History of Medicine to the Beginning of the Current Century

**Inventions, Discoveries and Awards:**

The Public Health service Badge from the French President General de Gaulle in 1963

His Majesty's Badge of the Fourth class from Iran's Government in 1972

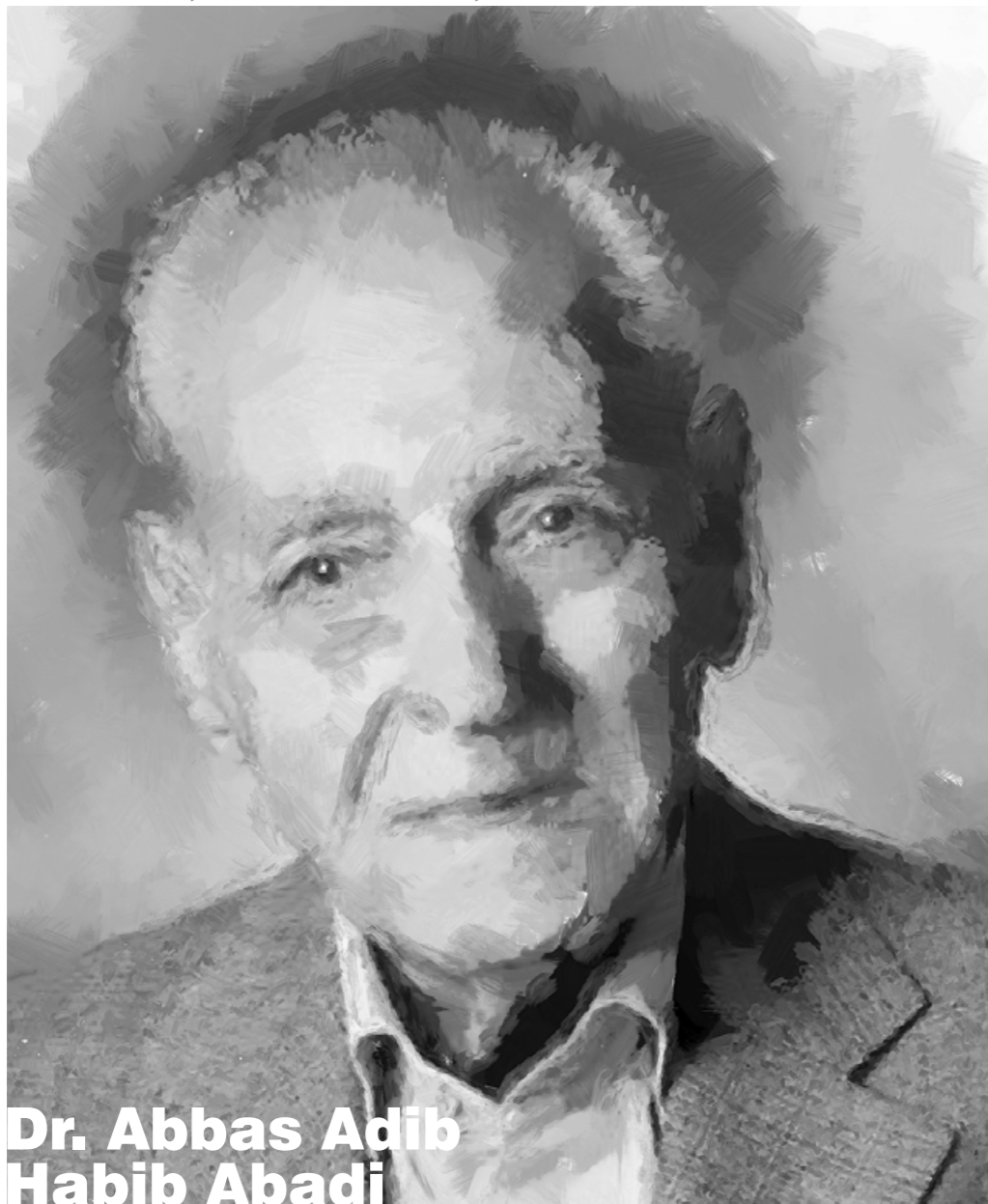
Received Order of Scientific Distinction for being top student throughout his education

Honoring Dr. Nafisi by the Academy of Medical Sciences in 1996

**Message:**

The first step is to carefully listen to the patient's account of disease. The second step is the physical examination of the patient. The third step is the mental status examination of the patient. The fourth step is to use auxiliary or so-called paraclinical equipment. The final step is follow-up. Special attention should be given to the patients' psychological, social and economic status.

■ The Elite of Faculty of Medicine, Isfahan University of Medical Sciences



**Dr. Abbas Adib  
Habib Abadi**

## THE UNIVERSITY ELITES

### **Dr. Abbas Adib Habib Abadi**

**Date of Birth:** 1922

**Department:** Pharmacology

**Education:**

Graduated from Tehran Medical University in 1951

Received Pharmacology Specialty from the French School of Medicine in France in 1960

Laid the first stone of the university.

**Books:**

Medical Pharmacology, 1975

Enlightenment in Traditional and Modern Medicine, 1991

Cholesterol and Stroke, 1994

Medical Pharmacology, 1996

Health from childhood to Adulthood, 1999

Gene Therapy, 2005

Midwifery Pharmacology, 2005

From School to University, 2005

**Inventions, Discoveries and Awards:**

Establishment of a Pharmacological Lab for the first time in Iran in 1955

Selection of Diagnosis and Treatment of Diseases as Iran's book of the year

First rank in the province for compilation of medical books, 2004

**Message:**

He overcame all the obstacles on the way to his goals with perseverance and endeavor.

